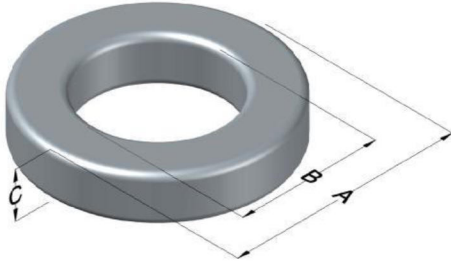




0079552A7HT19

110 Delta Drive
 Pittsburgh, PA 15238
 NAFTA Sales: (1)800-245-3984
 HK Sales : (852)3102-9337
 magnetics@spang.com
 www.mag-inc.com



Kool M μ Max Permeability (μ)	A _L (nH/T ²)	Core Marking			Coating Color
		Lot Number	Part Number	Inductance Grade	
90	153 \pm 8%	XXXXXX	79552A7HT19	N/A	Black

Dimensions					Packaging
Uncoated		Coated Limits			
	(mm)	(in)	(mm)	(in)	
OD (A)	32.79	1.291	33.66	1.325	
ID (B)	20.09	0.791	19.46	0.766	
HT (C)	17.98	0.708	19.00	0.748	

Electrical Characteristics			Physical Characteristics						
Watt Loss @ 100kHz, 100mT (max, mW/cm ³)	DC Bias min (Oersteds)		Voltage Breakdown wire-to-wire min (V _{AC})	Break Strength (min, kg)	Window Area, W _A (mm ²)	Cross Section, A _e (mm ²)	Path Length, L _e (mm)	Volume V _e (mm ³)	Weight (g)
	80%	50%							
550	28	62	2000	78.9	296	110.5	81.4	8,995	62.7

Winding Information						Temperature Rating	
Winding Length per Turn				Wound Coil Dimensions (mm)		Curie Temp (°C):	500 °C
Winding Factor	(mm)	Winding Factor	(mm)	40% Winding Factor	OD	Coating Temp:	
					36.8	(Continuous, up to; °C)	
0%	52.5	40%	62.3	Completely Full Window	HT	Notes:	
20%	57.5	45%	63.9		Max OD		
25%	58.6	50%	65.2		46.7		
30%	59.8	60%	68.3		Max HT		
35%	61.2	70%	71.8		35.6		

Typical DC Bias Performance

