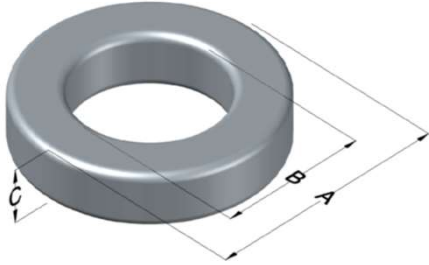




0079384A7

110 Delta Drive
 Pittsburgh, PA 15238
 NAFTA Sales: (1)800-245-3984
 HK Sales : (852)3102-9337
 magnetics@spang.com
 www.mag-inc.com



Kool M μ MAX Permeability (μ)	A _L (nH/T ²)	Core Marking			Coating Color
		Lot Number	Part Number	Inductance Grade	
90	64 \pm 8%	XXXXXX	79384A7	N/A	Black

Dimensions	Uncoated		Coated Limits			Packaging
	(mm)	(in)	(mm)	(in)		
OD (A)	17.27	0.680	18.03	0.710	max	Bulk Pack 4 bags/box Box Qty= 2000 pcs
ID (B)	9.65	0.380	9.02	0.355	min	
HT (C)	6.35	0.250	7.11	0.280	max	

Electrical Characteristics			Physical Characteristics						
Watt Loss @ 100kHz, 100mT max (mW/cm ³)	DC Bias min (oersteds)		Voltage Breakdown wire to wire min (V _{AC})	Break Strength min (kg)	Window Area W _a (mm ²)	Cross Section A _e (mm ²)	Path Length L _e (mm)	Volume V _e (mm ³)	Weight (g)
	80%	50%							
750	25	60	1250	28.0	63.9	23.3	41.1	960	7.13

Winding Information					Temperature Rating		
Winding Length Per Turn				Wound Coil Dimensions (mm)			Curie Temp: 500°C
Winding Factor	(mm)	Winding Factor	(mm)	40% Winding Factor		OD	20.0
				Max OD	20.0		
0%	23.2	40%	27.9	Completely Full Window	Max HT	13.1	Coating Temp (Continuous up to): 200°C
20%	25.6	45%	28.5				
25%	26.2	50%	29.2	Surface Area (mm ²)			Notes:
30%	26.6	60%	30.7	Unwound Core		990	
35%	27.3	70%	32.2	40% Winding Factor		1,400	

