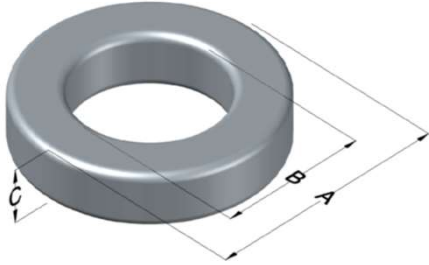




**0079328A7**

110 Delta Drive  
 Pittsburgh, PA 15238  
 NAFTA Sales: (1)800-245-3984  
 HK Sales : (852)3102-9337  
 magnetics@spang.com  
 www.mag-inc.com



Kool M $\mu$ MAX Permeability ( $\mu$ )	A <sub>L</sub> (nH/T <sup>2</sup> )	Core Marking			Coating Color
		Lot Number	Part Number	Inductance Grade	
90	84 $\pm$ 8%	XXXXXX	79328A7	N/A	Black

Dimensions	Uncoated		Coated Limits			Packaging
	(mm)	(in)	(mm)	(in)		
OD (A)	35.81	1.410	36.70	1.445	max	Cardboard cut-outs Box Qty= 220 pcs
ID (B)	22.35	0.880	21.54	0.848	min	
HT (C)	10.46	0.412	11.35	0.447	max	

Electrical Characteristics			Physical Characteristics						
Watt Loss @ 100kHz, 100mT max (mW/cm <sup>3</sup> )	DC Bias min (oersteds)		Voltage Breakdown wire to wire min (V <sub>AC</sub> )	Break Strength min (kg)	Window Area W <sub>a</sub> (mm <sup>2</sup> )	Cross Section A <sub>e</sub> (mm <sup>2</sup> )	Path Length L <sub>e</sub> (mm)	Volume V <sub>e</sub> (mm <sup>3</sup> )	Weight (g)
	80%	50%							
750	25	60	3000	80.0	364	67.9	89.7	6,090	44.0

Winding Information					Temperature Rating	
Winding Length Per Turn				Wound Coil Dimensions (mm)		Curie Temp: 500°C
Winding Factor	(mm)	Winding Factor	(mm)	40% Winding Factor		Coating Temp (Continuous up to): 200°C
				OD	HT	
0%	37.9	40%	48.8	Max OD	43.3	Notes:
20%	43.4	45%	50.5			
25%	44.7	50%	52.0	Surface Area (mm <sup>2</sup> )		
30%	46.0	60%	55.4	Unwound Core		
35%	47.6	70%	59.2	40% Winding Factor		

