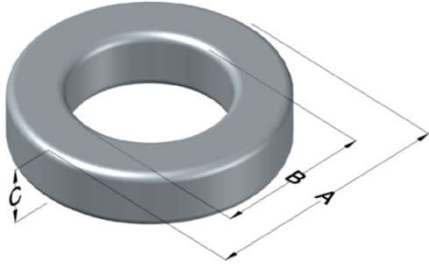




**0079210A7**

110 Delta Drive  
 Pittsburgh, PA 15238  
 NAFTA Sales: (1)800-245-3984  
 HK Sales : (852)3102-9337  
 magnetics@spang.com  
 www.mag-inc.com



Kool M $\mu$ MAX Permeability ( $\mu$ )	A <sub>L</sub> (nH/T <sup>2</sup> )	Core Marking			Coating Color
		Lot Number	Part Number	Inductance Grade	
90	49 ± 8%	XXXXXX	79210A7	N/A	Black

Dimensions	Uncoated		Coated Limits			Packaging
	(mm)	(in)	(mm)	(in)		
OD (A)	20.32	0.800	21.08	0.830	max	Bulk Pack 4 bags/box Box Qty=1600 pcs
ID (B)	12.70	0.500	12.07	0.475	min	
HT (C)	6.35	0.250	7.11	0.280	max	

Electrical Characteristics			Physical Characteristics						
Watt Loss @ 100kHz, 100mT max (mW/cm <sup>3</sup> )	DC Bias min (oersteds)		Voltage Breakdown wire to wire min (V <sub>AC</sub> )	Break Strength min (kg)	Window Area W <sub>a</sub> (mm <sup>2</sup> )	Cross Section A <sub>e</sub> (mm <sup>2</sup> )	Path Length L <sub>e</sub> (mm)	Volume V <sub>e</sub> (mm <sup>3</sup> )	Weight (g)
	80%	50%							
750	25	60	2000	29.0	114	22.1	50.9	1,120	8.74

Winding Information					Temperature Rating	
Winding Length Per Turn				Wound Coil Dimensions (mm)		Curie Temp: 500°C
Winding Factor	(mm)	Winding Factor	(mm)	40% Winding Factor		Coating Temp (Continuous up to): 200°C
				OD	HT	
0%	23.2	40%	29.3	Max OD	24.7	Notes:
20%	26.3	45%	30.3	Max HT	15.5	
25%	27.0	50%	31.1	Surface Area (mm <sup>2</sup> )		
30%	27.8	60%	32.9	Unwound Core		1,200
35%	28.6	70%	35.1	40% Winding Factor		1,800

