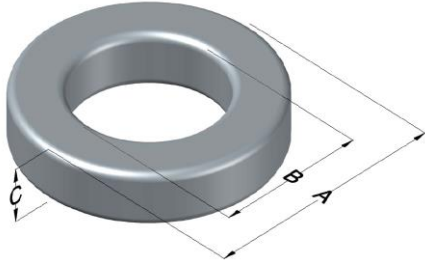




0079192A7X2

110 Delta Drive
 Pittsburgh, PA 15238
 NAFTA Sales: (1)800-245-3984
 HK Sales : (852)3102-9337
 magnetics@spang.com



Kool M μ MAX Permeability (μ)	A _L (nH/T ²)	Core Marking			Coating Color
		Lot Number	Part Number	Inductance Grade	
60	276 ± 8%	XXXXXX	79192A7X2	N/A	Black

Dimensions	Uncoated		Coated Limits			Packaging
	(mm)	(in)	(mm)	(in)		
OD (A)	57.15	2.250	58.34	2.297	max	Cardboard cut-outs Box Qty = TBD
ID (B)	26.39	1.039	24.98	0.983	min	
HT (C)	30.48	1.200	31.87	1.255	max	

Electrical Characteristics			Physical Characteristics						
Watt Loss @ 100kHz, 100mT max (mW/cm ³)	DC Bias min (oersteds)		Voltage Breakdown wire to wire min (V _{AC})	Break Strength min (kg)	Window Area W _a (mm ²)	Cross Section A _e (mm ²)	Path Length L _e (mm)	Volume V _e (mm ³)	Est. Weight (g)
	700	80%							
	58	116							

Winding Information					Temperature Rating	
Winding Length Per Turn				Wound Coil Dimensions (mm)		Curie Temp: 500°C
Winding Factor	(mm)	Winding Factor	(mm)	40% Winding Factor		Coating Temp (Continuous up to): 200°C
				OD	61.2	Notes:
				HT	39.5	
				Max OD	63.1	
				Max HT	41.4	
0%	97.1	40%	109	Surface Area (mm ²)		
20%	103	45%	111	Unwound Core		
25%	105	50%	ERROR	40% Winding Factor		
30%	106	60%	ERROR	13,000		
35%	108	70%	ERROR	15,000		

