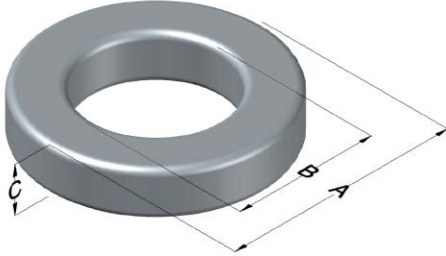




**0079189A7**

110 Delta Drive  
 Pittsburgh, PA 15238  
 NAFTA Sales: (1)800-245-3984  
 HK Sales : (852)3102-9337  
 magnetics@spang.com  
 www.mag-inc.com



Kool M $\mu$ MAX Permeability ( $\mu$ )	A <sub>L</sub> (nH/T <sup>2</sup> )	Core Marking			Coating Color
		Lot Number	Part Number	Inductance Grade	
40	92 $\pm$ 8%	XXXXXX	79189A7	N/A	Black

Dimensions	Uncoated		Coated Limits			Packaging
	(mm)	(in)	(mm)	(in)		
OD (A)	57.20	2.250	58.04	2.285	max	Cardboard cut-outs Box Qty= 80 pcs
ID (B)	26.40	1.039	25.57	1.007	min	
HT (C)	15.2	0.600	16.2	0.635	max	

Electrical Characteristics			Physical Characteristics						
Watt Loss @ 100 kHz, 100mT max(mW/cm <sup>3</sup> )	DC Bias min (oersteds)		Voltage Breakdown wire to wire min (V <sub>AC</sub> )	Break Strength min (kg)	Window Area W <sub>A</sub> (mm <sup>2</sup> )	Cross Section A <sub>e</sub> (mm <sup>2</sup> )	Path Length L <sub>e</sub> (mm)	Volume V <sub>e</sub> (mm <sup>3</sup> )	Weight (g)
	80%	50%							
700	83.0	180	2000	163.0	514	229	125	28,600	170

Winding Information					Temperature Rating	
Winding Length Per Turn				Wound Coil Dimensions (mm)		Curie Temp: 500°C
Winding Factor	(mm)	Winding Factor	(mm)	40% Winding Factor		Coating Temp (Continuous up to): 200°C
				OD	62.0	
				HT	24.0	Notes:
				Completely Full Window		
				Max OD	75.7	
0%	64.6	40%	77.8	Max HT	34.0	
20%	71.2	45%	79.8	Surface Area (mm <sup>2</sup> )		
25%	72.9	50%	81.6	Unwound Core		8,500
30%	74.1	60%	85.6	40% Winding Factor		12,000
35%	76.3	70%	90.1			

