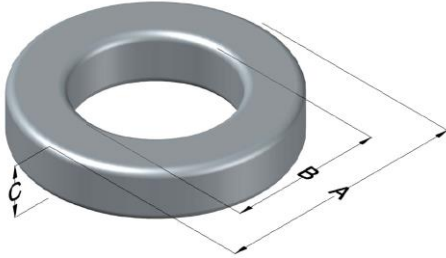




0079079A7

110 Delta Drive
 Pittsburgh, PA 15238
 NAFTA Sales: (1)800-245-3984
 HK Sales : (852)3102-9337
 magnetics@spang.com
 www.mag-inc.com



Kool M μ MAX Permeability (μ)	A _L (nH/T ²)	Core Marking			Coating Color
		Lot Number	Part Number	Inductance Grade	
19	27 ± 8%	XXXXXX	79079A7	N/A	Black

Dimensions	Uncoated		Coated Limits			Packaging
	(mm)	(in)	(mm)	(in)		
OD (A)	46.70	1.840	47.63	1.875	max	Cardboard cut-outs Box Qty= 120 pcs
ID (B)	28.70	1.130	27.88	1.098	min	
HT (C)	15.2	0.600	16.2	0.635	max	

Electrical Characteristics			Physical Characteristics						
Watt Loss @ 50 kHz, 100mT max(mW/cm ³)	DC Bias min (A-T/cm)		Voltage Breakdown wire to wire min (V _{AC})	Break Strength min (kg)	Window Area W _A (mm ²)	Cross Section A _e (mm ²)	Path Length L _e (mm)	Volume V _e (mm ³)	Weight (g)
	80%	50%							
325	185	375	2000	99	610	134	116	15,600	92

Winding Information					Temperature Rating	
Winding Length Per Turn				Wound Coil Dimensions (mm)		Curie Temp: 500°C
Winding Factor	(mm)	Winding Factor	(mm)	40% Winding Factor		Coating Temp (Continuous up to): 200°C
				OD	52.0	
				HT	24.9	Notes:
				Max OD	66.3	
				Max HT	39.8	
0%	52.0	40%	66.4	Completely Full Window		
20%	59.1	45%	68.2	Surface Area (mm ²)		
25%	61.0	50%	70.4			
30%	62.2	60%	74.7	Unwound Core	6,100	
35%	64.5	70%	79.5	40% Winding Factor	9,800	

