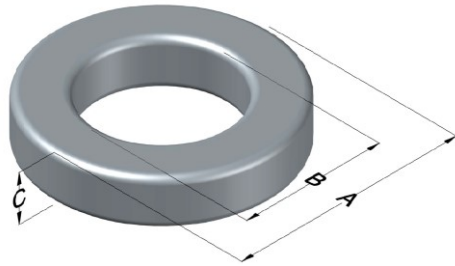




**0079075A7**

110 Delta Drive  
 Pittsburgh, PA 15238  
 NAFTA Sales: (1)800-245-3984  
 HK Sales : (852)3102-9337  
 magnetics@spang.com  
 www.mag-inc.com



Kool Mu MAX Permeability ( $\mu$ )	$A_L$ (nH/T <sup>2</sup> )	Core Marking			Coating Color
		Lot Number	Part Number	Inductance Grade	
14	33 ± 8%	XXXXXX	79075A7	N/A	Black

Dimensions					Packaging
Uncoated		Coated Limits			
	(mm)	(in)	(mm)	(in)	
OD (A)	68.00	2.677	69.42	2.733	Cardboard cut-outs Box Qty = 35 Pcs
ID (B)	35.99	1.417	34.67	1.365	
HT (C)	19.99	0.787	21.41	0.843	

Electrical Characteristics			Physical Characteristics						
Watt Loss @ 50kHz, 100mT (nom, mW/cm <sup>3</sup> )	DC Bias nom. (Oe)		Voltage Breakdown wire-to-wire min (V <sub>AC</sub> )	Break Strength (min, kg)	Window Area, W <sub>A</sub> (mm <sup>2</sup> )	Cross Section, A <sub>e</sub> (mm <sup>2</sup> )	Path Length, L <sub>e</sub> (mm)	Volume V <sub>e</sub> (mm <sup>3</sup> )	Weight (g)
	80%	50%							
305	280	520	2000	181.4	944	314	158	49600	312.5

Winding Information					Temperature Rating	
Winding Length per Turn			Wound Coil Dimensions (mm)		Curie Temp (°C):	500 °C
Winding Factor	(mm)	Winding Factor	(mm)	40% Winding Factor	OD	79.3
0%	77.7	40%	95.7	Completely Full Window	HT	37.2
20%	86.6	45%	97.9		Max OD	89.2
25%	89.0	50%	100.1	Surface Area (mm <sup>2</sup> )	Max HT	45.4
30%	90.5	60%	106.0		Unwound Core:	12700
35%	93.4	70%	111.8		40% Wound:	18400

