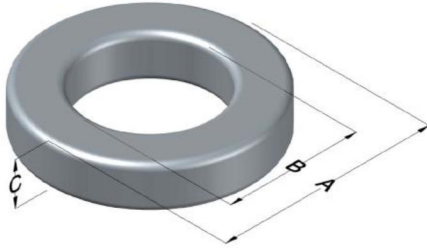




0079071A7HT15

110 Delta Drive
 Pittsburgh, PA 15238
 NAFTA Sales: (1)800-245-3984
 HK Sales : (852)3102-9337
 magnetics@spang.com
 www.mag-inc.com



| Kool M μ MAX Permeability (μ) | A _L (nH/T ²) | Core Marking | | | Coating Color |
|---|-------------------------------------|--------------|-------------|------------------|---------------|
| | | Lot Number | Part Number | Inductance Grade | |
| 60 | 80 \pm 8% | XXXXXX | 79071A7HT15 | N/A | Black |

| Dimensions | Uncoated | | Coated Limits | | | Packaging |
|------------|----------|-------|---------------|-------|-----|--|
| | (mm) | (in) | (mm) | (in) | | |
| OD (A) | 32.79 | 1.291 | 33.66 | 1.325 | max | Cardboard cut-outs Box Qty= 225 pcs |
| ID (B) | 20.09 | 0.791 | 19.46 | 0.766 | min | |
| HT (C) | 14 | 0.551 | 15 | 0.590 | max | |

| Electrical Characteristics | | | Physical Characteristics | | | | | | |
|--|------------------------|-----|---|-------------------------|---|---|---------------------------------|--|------------|
| Watt Loss @ 100 kHz, 100mT max (mW/cm ³) | DC Bias min (oersteds) | | Voltage Breakdown wire to wire min (V _{AC}) | Break Strength min (kg) | Window Area W _A (mm ²) | Cross Section A _e (mm ²) | Path Length L _e (mm) | Volume V _e (mm ³) | Weight (g) |
| | 80% | 50% | | | | | | | |
| 700 | 58 | 116 | 3000 | 79.0 | 297 | 86.0 | 81.4 | 7,000 | 48 |

| Winding Information | | | | | Temperature Rating | | |
|-------------------------|------|----------------|------|---------------------------------|--------------------|------|--|
| Winding Length Per Turn | | | | Wound Coil Dimensions (mm) | | | Curie Temp: 500°C |
| Winding Factor | (mm) | Winding Factor | (mm) | 40% Winding Factor | OD | 36.8 | Coating Temp (Continuous up to): 200°C |
| | | | | | HT | 21.3 | |
| 0% | 44.3 | 40% | 54.2 | Completely Full Window | Max OD | 46.7 | Notes: |
| | | | | | Max HT | 31.5 | |
| 20% | 49.2 | 45% | 55.5 | Surface Area (mm ²) | | | |
| 25% | 50.3 | 50% | 56.9 | Unwound Core | 3,700 | | |
| 30% | 51.6 | 60% | 60.0 | 40% Winding Factor | 5,800 | | |
| 35% | 52.8 | 70% | 63.4 | | | | |

