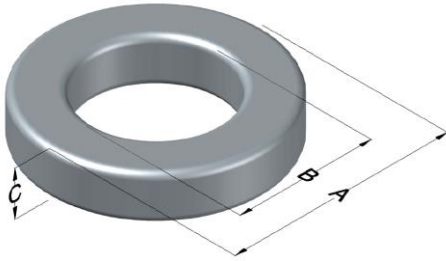




0078733A7

110 Delta Drive
 Pittsburgh, PA 15238
 NAFTA Sales: (1)800-245-3984
 HK Sales : (852)3102-9337
 magnetics@spang.com
 www.mag-inc.com



XFLUX Permeability (μ)	A_L (nH/T ²)	Core Marking			Coating Color
		Lot Number	Part Number	Inductance Grade	
40	116 ± 8%	XXXXXX	78733A7	N/A	Brown

Dimensions	Uncoated		Coated Limits			Packaging
	(mm)	(in)	(mm)	(in)		
OD (A)	50.55	1.990	51.31	2.020	max	Cardboard cut-outs Box Qty= 70 pcs
ID (B)	24.89	0.980	23.88	0.940	min	
HT (C)	21.08	0.830	21.59	0.850	max	

Electrical Characteristics			Physical Characteristics						
Watt Loss @ 50 kHz, 100mT max(mW/cm ³)	DC Bias min (oersteds)		Voltage Breakdown wire to wire min (V _{AC})	Break Strength min (kg)	Window Area W _A (mm ²)	Cross Section A _e (mm ²)	Path Length L _e (mm)	Volume V _e (mm ³)	Weight (g)
	850	80% 120							

Winding Information					Temperature Rating		
Winding Length Per Turn				Wound Coil Dimensions (mm)		Curie Temp: 700°C	
Winding Factor	(mm)	Winding Factor	(mm)	40% Winding Factor		Coating Temp (Continuous up to): 200°C	
				OD	64.0		
0%	131	40%	143	Completely Full Window		Notes:	
				HT	39.6		
20%	137	45%	145	Max OD	72.0		
25%	138	50%	147	Max HT	42.0		
Surface Area (mm ²)				Unwound Core			23,310
30%	140	60%	150	40% Winding Factor			33,600
35%	142	70%	155				

