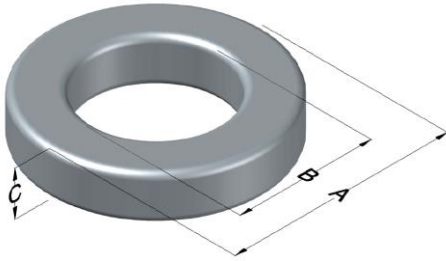




0078730A7

110 Delta Drive
 Pittsburgh, PA 15238
 NAFTA Sales: (1)800-245-3984
 HK Sales : (852)3102-9337
 magnetics@spang.com
 www.mag-inc.com



XFLUX Permeability (μ)	A_L (nH/T ²)	Core Marking			Coating Color
		Lot Number	Part Number	Inductance Grade	
90	263 \pm 8%	XXXXXX	78730A7	N/A	Brown

Dimensions	Uncoated		Coated Limits			Packaging
	(mm)	(in)	(mm)	(in)		
OD (A)	50.55	1.990	51.31	2.020	max	Cardboard cut-outs Box Qty= 70 pcs
ID (B)	24.89	0.980	23.88	0.940	min	
HT (C)	21.08	0.830	21.59	0.850	max	

Electrical Characteristics			Physical Characteristics						
Watt Loss @ 50 kHz, 100mT max(mW/cm ³)	DC Bias min (A-T/cm)		Voltage Breakdown wire to wire min (V _{AC})	Break Strength min (kg)	Window Area W _A (mm ²)	Cross Section A _e (mm ²)	Path Length L _e (mm)	Volume V _e (mm ³)	Weight (g)
	80%	60%							
700	48	95	2000	95	452	262	113.5	29,700	200

Winding Information					Temperature Rating	
Winding Length Per Turn				Wound Coil Dimensions (mm)		Curie Temp: 700°C
Winding Factor	(mm)	Winding Factor	(mm)	40% Winding Factor		Coating Temp (Continuous up to): 200°C
				OD	64.0	
				HT	39.6	Notes:
				Completely Full Window		
				Max OD	72.0	
0%	131	40%	143	Max HT	42.0	
20%	137	45%	145	Surface Area (mm ²)		
25%	138	50%	147	Unwound Core		23,310
30%	140	60%	150	40% Winding Factor		33,600
35%	142	70%	155			

