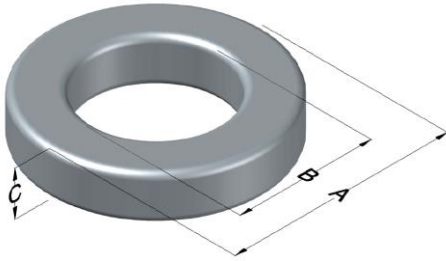




**0078727A7**

110 Delta Drive  
 Pittsburgh, PA 15238  
 NAFTA Sales: (1)800-245-3984  
 HK Sales : (852)3102-9337  
 magnetics@spang.com  
 www.mag-inc.com



XFLUX Permeability ( $\mu$ )	$A_L$ (nH/T <sup>2</sup> )	Core Marking			Coating Color
		Lot Number	Part Number	Inductance Grade	
26	76 $\pm$ 8%	XXXXXX	78727A7	N/A	Brown

Dimensions	Uncoated		Coated Limits			Packaging
	(mm)	(in)	(mm)	(in)		
OD (A)	50.55	1.990	51.31	2.020	max	Cardboard cut-outs Box Qty= 70 pcs
ID (B)	24.89	0.980	23.88	0.940	min	
HT (C)	21.08	0.830	21.59	0.850	max	

Electrical Characteristics			Physical Characteristics						
Watt Loss @ 50 kHz, 100mT max(mW/cm <sup>3</sup> )	DC Bias min (oersteds)		Voltage Breakdown wire to wire min (V <sub>AC</sub> )	Break Strength min (kg)	Window Area W <sub>A</sub> (mm <sup>2</sup> )	Cross Section A <sub>e</sub> (mm <sup>2</sup> )	Path Length L <sub>e</sub> (mm)	Volume V <sub>e</sub> (mm <sup>3</sup> )	Weight (g)
	850	80%							
	185	320							

Winding Information					Temperature Rating	
Winding Length Per Turn				Wound Coil Dimensions (mm)		Curie Temp: 700°C
Winding Factor	(mm)	Winding Factor	(mm)	40% Winding Factor		Coating Temp (Continuous up to): 200°C
				OD	64.0	
				HT	39.6	Notes:
				Completely Full Window		
				Max OD	72.0	
0%	131	40%	143	Max HT	42.0	
20%	137	45%	145	Surface Area (mm <sup>2</sup> )		
25%	138	50%	147	Unwound Core		23,310
30%	140	60%	150	40% Winding Factor		33,600
35%	142	70%	155			

**Typical DC Bias Performance**

