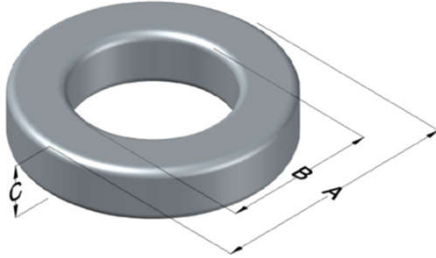




0078454A7

110 Delta Drive
 Pittsburgh, PA 15238
 NAFTA Sales: (1)800-245-3984
 HK Sales : (852)3102-9337
 magnetics@spang.com
 www.mag-inc.com



XFlux Permeability (μ)	A_L (nH/T ²)	Core Marking			Coating Color
		Lot Number	Part Number	Inductance Grade	
125	224 ± 8%	XXXXXX	78454A7	N/A	Brown

Dimensions	Uncoated		Coated Limits			Packaging
	(mm)	(in)	(mm)	(in)		
OD (A)	42.90	1.689	43.84	1.726	max	Cardboard cut-outs Box Qty = 120 Pcs
ID (B)	24.21	0.953	23.39	0.921	min	
HT (C)	16.26	0.640	17.27	0.680	max	

Electrical Characteristics			Physical Characteristics						
Watt Loss @ 50kHz, 100mT max (mW/cm ³)	DC Bias min (oersteds)		Voltage Breakdown wire to wire min (V _{AC})	Break Strength min (kg)	Window Area W _a (mm ²)	Cross Section A _e (mm ²)	Path Length L _e (mm)	Volume V _e (mm ³)	Est. Weight (g)
	80%	50%							
700	27	55	3000	98.8	430	148	103	15,100	110

Winding Information					Temperature Rating	
Winding Length Per Turn				Wound Coil Dimensions (mm)		Curie Temp: 700°C
Winding Factor	(mm)	Winding Factor	(mm)	40% Winding Factor	OD	49.4
					HT	25.7
0%	55.0	40%	67.3	Completely Full Window	Max OD	49.4
20%	60.8	45%	68.7		Max HT	34.1
25%	62.7	50%	70.6	Surface Area (mm ²)		
30%	63.9	60%	74.2	Unwound Core	5,800	
35%	65.4	70%	78.4	40% Winding Factor	8,700	
Coating Temp (Continuous up to): 200°C						
Notes:						

