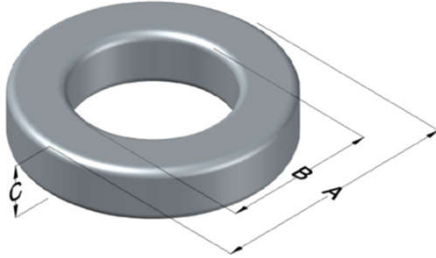




**0078438A7**

110 Delta Drive  
 Pittsburgh, PA 15238  
 NAFTA Sales: (1)800-245-3984  
 HK Sales : (852)3102-9337  
 magnetics@spang.com  
 www.mag-inc.com



XFlux Permeability ( $\mu$ )	$A_L$ (nH/T <sup>2</sup> )	Core Marking			Coating Color
		Lot Number	Part Number	Inductance Grade	
125	281 ± 8%	XXXXXX	78438A7	N/A	Brown

Dimensions	Uncoated		Coated Limits			Packaging
	(mm)	(in)	(mm)	(in)		
OD (A)	46.74	1.840	47.63	1.875	max	Cardboard cut-outs Box Qty= 105 pcs
ID (B)	24.13	0.950	23.32	0.918	min	
HT (C)	18.03	0.710	18.92	0.745	max	

Electrical Characteristics			Physical Characteristics						
Watt Loss @ 50kHz, 100mT max (mW/cm <sup>3</sup> )	DC Bias min (oersteds)		Voltage Breakdown wire to wire min (V <sub>AC</sub> )	Break Strength min (kg)	Window Area W <sub>a</sub> (mm <sup>2</sup> )	Cross Section A <sub>e</sub> (mm <sup>2</sup> )	Path Length L <sub>e</sub> (mm)	Volume V <sub>e</sub> (mm <sup>3</sup> )	Est. Weight (g)
	80%	50%							
700	27	55	3000	233.0	427	198	107	21,300	155

Winding Information					Temperature Rating	
Winding Length Per Turn				Wound Coil Dimensions (mm)		Curie Temp: 700°C
Winding Factor	(mm)	Winding Factor	(mm)	40% Winding Factor	OD	52.4
					HT	26.1
0%	62.2	40%	74.2	Completely Full Window	Max OD	54.8
20%	68.3	45%	76.0		Max HT	35.7
25%	69.7	50%	77.6	Surface Area (mm <sup>2</sup> )		
30%	71.0	60%	81.3	Unwound Core	6,900	
35%	72.8	70%	85.6	40% Winding Factor	9,500	
Coating Temp (Continuous up to): 200°C						
Notes:						

