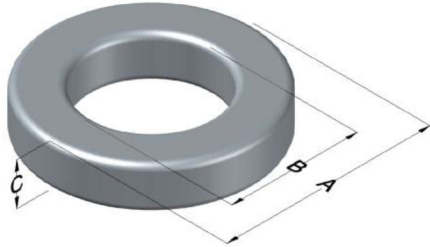




0078384A7

110 Delta Drive
 Pittsburgh, PA 15238
 NAFTA Sales: (1)800-245-3984
 HK Sales : (852)3102-9337
 magnetics@spang.com
 www.mag-inc.com



XFLUX Permeability (μ)	A_L (nH/T ²)	Core Marking			Coating Color
		Lot Number	Part Number	Inductance Grade	
90	64 ± 8%	XXXXXX	78384A7	N/A	Brown

Dimensions	Uncoated		Coated Limits			Packaging
	(mm)	(in)	(mm)	(in)		
OD (A)	17.27	0.680	18.03	0.710	max	Bulk Pack 4 bags/box Box Qty= 2000 pcs
ID (B)	9.65	0.380	9.02	0.355	min	
HT (C)	6.35	0.250	7.11	0.280	max	

Electrical Characteristics			Physical Characteristics						
Watt Loss @ 50 kHz, 100mT max(mW/cm ³)	DC Bias min (oersteds)		Voltage Breakdown wire to wire min (V _{AC})	Break Strength min (kg)	Window Area W _A (mm ²)	Cross Section A _e (mm ²)	Path Length L _e (mm)	Volume V _e (mm ³)	Weight (g)
	80%	50%							
700	48.0	95.0	2000	28.0	63.8	23.2	41.4	960	7.6000

Winding Information					Temperature Rating	
Winding Length Per Turn				Wound Coil Dimensions (mm)		Curie Temp: 700°C
Winding Factor	(mm)	Winding Factor	(mm)	40% Winding Factor		Coating Temp (Continuous up to): 200°C
				OD	19.6	Notes:
				HT	10.1	
				Completely Full Window		
				Max OD	24.9	
				Max HT	16.3	
				Surface Area (mm ²)		
				Unwound Core		990
				40% Winding Factor		1,400

