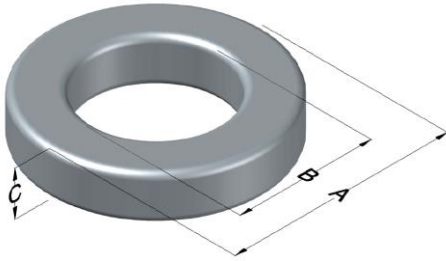




**0078312A7**

110 Delta Drive  
 Pittsburgh, PA 15238  
 NAFTA Sales: (1)800-245-3984  
 HK Sales : (852)3102-9337  
 magnetics@spang.com  
 www.mag-inc.com



XFLUX Permeability ( $\mu$ )	A <sub>L</sub> (nH/T <sup>2</sup> )	Core Marking			Coating Color
		Lot Number	Part Number	Inductance Grade	
26	19 ± 8%	XXXXXX	78312A7	N/A	Brown

Dimensions	Uncoated		Coated Limits			Packaging
	(mm)	(in)	(mm)	(in)		
OD (A)	22.9	0.900	23.7	0.930	max	Bulk Pack 4 bags/box Box Qty= 1000 pcs
ID (B)	14.0	0.550	13.3	0.525	Min	
HT (C)	7.62	0.300	8.39	0.330	max	

Electrical Characteristics			Physical Characteristics						
Watt Loss @ 50 kHz, 100mT max(mW/cm <sup>3</sup> )	DC Bias min (oersteds)		Voltage Breakdown wire to wire min (V <sub>AC</sub> )	Break Strength min (kg)	Window Area W <sub>A</sub> (mm <sup>2</sup> )	Cross Section A <sub>e</sub> (mm <sup>2</sup> )	Path Length L <sub>e</sub> (mm)	Volume V <sub>e</sub> (mm <sup>3</sup> )	Weight (g)
	850	80%							
	185	320							

Winding Information					Temperature Rating	
Winding Length Per Turn				Wound Coil Dimensions (mm)		Curie Temp: 700°C
Winding Factor	(mm)	Winding Factor	(mm)	40% Winding Factor		Coating Temp (Continuous up to): 200°C
				OD	25.7	
				HT	12.4	Notes:
				Completely Full Window		
				Max OD	32.6	
0%	27.0	40%	33.9	Max HT	19.8	
20%	30.5	45%	34.9	Surface Area (mm <sup>2</sup> )		
25%	31.3	50%	35.9	Unwound Core		1,600
30%	32.0	60%	38.0	40% Winding Factor		2,400
35%	33.1	70%	40.4			

