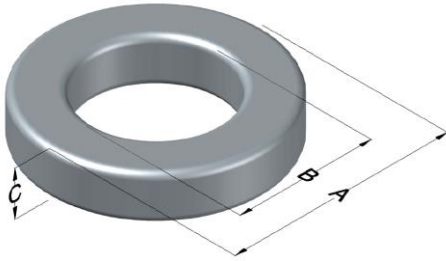




0078193A7

110 Delta Drive
 Pittsburgh, PA 15238
 NAFTA Sales: (1)800-245-3984
 HK Sales : (852)3102-9337
 magnetics@spang.com
 www.mag-inc.com



XFLUX Permeability (μ)	A_L (nH/T ²)	Core Marking			Coating Color
		Lot Number	Part Number	Inductance Grade	
75	172 ± 8%	XXXXXX	78193A7	N/A	Brown

Dimensions	Uncoated		Coated Limits			Packaging
	(mm)	(in)	(mm)	(in)		
OD (A)	57.20	2.250	58.04	2.285	max	Cardboard cut-outs Box Qty= 80 pcs
ID (B)	26.40	1.039	25.57	1.007	min	
HT (C)	15.2	0.600	16.2	0.635	max	

Electrical Characteristics			Physical Characteristics						
Watt Loss @ 50 kHz, 100mT max(mW/cm ³)	DC Bias min (oersteds)		Voltage Breakdown wire to wire min (V _{AC})	Break Strength min (kg)	Window Area W _A (mm ²)	Cross Section A _e (mm ²)	Path Length L _e (mm)	Volume V _e (mm ³)	Weight (g)
	80%	50%							
700	63.0	120	2000	163.0	514	229	125	28,600	210

Winding Information					Temperature Rating	
Winding Length Per Turn				Wound Coil Dimensions (mm)		Curie Temp: 700°C
Winding Factor	(mm)	Winding Factor	(mm)	40% Winding Factor	OD	62.0
					HT	24.0
0%	64.6	40%	77.8	Completely Full Window	Max OD	75.7
20%	71.2	45%	79.8		Max HT	34.0
25%	72.9	50%	81.6	Surface Area (mm ²)		
30%	74.1	60%	85.6	Unwound Core		8,500
35%	76.3	70%	90.1	40% Winding Factor		12,000
Coating Temp (Continuous up to): 200°C						
Notes:						

