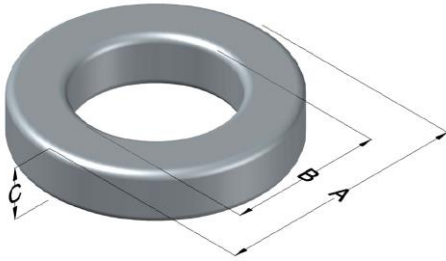




0078192A7

110 Delta Drive
 Pittsburgh, PA 15238
 NAFTA Sales: (1)800-245-3984
 HK Sales : (852)3102-9337
 magnetics@spang.com
 www.mag-inc.com



XFLUX Permeability (μ)	A_L (nH/T ²)	Core Marking			Coating Color
		Lot Number	Part Number	Inductance Grade	
60	138 \pm 8%	XXXXXX	78192A7	N/A	Brown

Dimensions	Uncoated		Coated Limits			Packaging
	(mm)	(in)	(mm)	(in)		
OD (A)	57.20	2.250	58.04	2.285	max	Cardboard cut-outs Box Qty= 80 pcs
ID (B)	26.40	1.039	25.57	1.007	min	
HT (C)	15.2	0.600	16.2	0.635	max	

Electrical Characteristics			Physical Characteristics						
Watt Loss @ 50 kHz, 100mT max(mW/cm ³)	DC Bias min (oersteds)		Voltage Breakdown wire to wire min (V _{AC})	Break Strength min (kg)	Window Area W _A (mm ²)	Cross Section A _e (mm ²)	Path Length L _e (mm)	Volume V _e (mm ³)	Weight (g)
	80%	50%							
850	80.0	150	2000	163.0	514	229	125	28,600	200

Winding Information					Temperature Rating	
Winding Length Per Turn				Wound Coil Dimensions (mm)		Curie Temp: 700°C
Winding Factor	(mm)	Winding Factor	(mm)	40% Winding Factor		Coating Temp (Continuous up to): 200°C
				OD	62.0	
				HT	24.0	Notes:
				Completely Full Window		
				Max OD	75.7	
0%	64.6	40%	77.8	Max HT	34.0	
20%	71.2	45%	79.8	Surface Area (mm ²)		
25%	72.9	50%	81.6	Unwound Core		
30%	74.1	60%	85.6	40% Winding Factor		
35%	76.3	70%	90.1	12,000		

Typical DC Bias Performance

