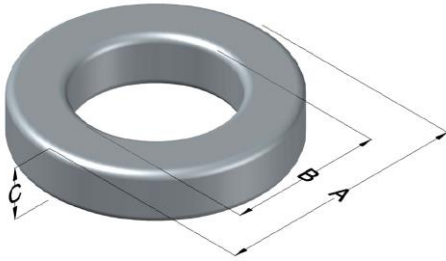




0078163A7

110 Delta Drive
 Pittsburgh, PA 15238
 NAFTA Sales: (1)800-245-3984
 HK Sales : (852)3102-9337
 magnetics@spang.com
 www.mag-inc.com



XFLUX Permeability (μ)	A_L (nH/T ²)	Core Marking			Coating Color
		Lot Number	Part Number	Inductance Grade	
19	57 ± 8%	XXXXXX	78163A7	N/A	Brown

Dimensions	Uncoated		Coated Limits			Packaging
	(mm)	(in)	(mm)	(in)		
OD (A)	165.10	6.500	166.50	6.555	max	Cardboard cut-outs Box Qty= 6 pcs
ID (B)	102.40	4.032	101.00	3.977	min	
HT (C)	31.75	1.250	33.15	1.305	max	

Electrical Characteristics			Physical Characteristics						
Watt Loss @ 50 kHz, 50mT max (mW/cm ³)	DC Bias min (Oe)		Voltage Breakdown wire to wire min (V _{AC})	Break Strength min (kg)	Window Area W _A (mm ²)	Cross Section A _e (mm ²)	Path Length L _e (mm)	Volume V _e (mm ³)	Weight (g)
	80%	50%							
230	290	565	2000	136	8,030	987	412	407,000	2,400

Winding Information					Temperature Rating	
Winding Length Per Turn				Wound Coil Dimensions (mm)		Curie Temp: 700°C
Winding Factor	(mm)	Winding Factor	(mm)	40% Winding Factor		Coating Temp (Continuous up to): 200°C
				OD	182	Notes:
				HT	63.2	
				Completely Full Window		
				Max OD	228	
				Max HT	103	
				Surface Area (mm ²)		
				Unwound Core		55,000
				40% Winding Factor		102,000
0%	132	40%	184			
20%	158	45%	192			
25%	164	50%	199			
30%	170	60%	215			
35%	178	70%	233			

