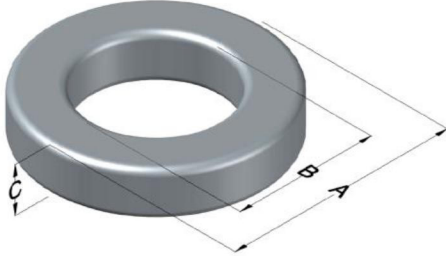




0078069A7

110 Delta Drive
 Pittsburgh, PA 15238
 NAFTA Sales: (1)800-245-3984
 HK Sales : (852)3102-9337
 magnetics@spang.com
 www.mag-inc.com



XFlux Permeability (μ)	A_L (nH/T ²)	Core Marking			Coating Color
		Lot Number	Part Number	Inductance Grade	
75	187 ± 8%	XXXXXX	78069A7	N/A	Brown

Dimensions	Uncoated		Coated Limits			Packaging
	(mm)	(in)	(mm)	(in)		
OD (A)	68.00	2.677	69.42	2.733	max	Cardboard cut-outs Box Qty= 35 pcs
ID (B)	35.99	1.417	34.67	1.365	min	
HT (C)	19.99	0.787	21.41	0.843	max	

Electrical Characteristics			Physical Characteristics						
Watt Loss @ 50 kHz, 100mT Max (mW/cm ³)	DC Bias min (oersteds)		Voltage Breakdown wire to wire min (V _{AC})	Break Strength min (kg)	Window Area W _A (mm ²)	Cross Section A _e (mm ²)	Path Length L _e (mm)	Volume V _e (mm ³)	Weight (g)
	80%	50%							
700	63	120	3000	181.0	945	314	158	49,700	360

Winding Information					Temperature Rating	
Winding Length Per Turn				Wound Coil Dimensions (mm)		Curie Temp: 500°C
Winding Factor	(mm)	Winding Factor	(mm)	40% Winding Factor		Coating Temp (Continuous up to): 200°C
				OD	74.7	Notes:
				HT	37.4	
				Completely Full Window		
				Max OD	92.7	
				Max HT	50.6	
				Surface Area (mm ²)		
				Unwound Core	12,700	
				40% Winding Factor	19,000	

Typical DC Bias Performance

