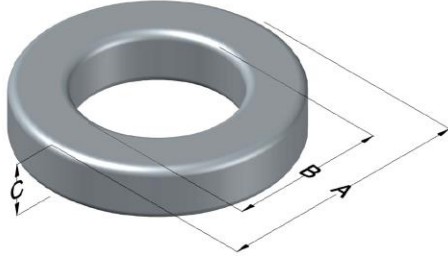




0078069A7

110 Delta Drive
Pittsburgh, PA 15238
NAFTA Sales: (1)800-245-3984
HK Sales : (852)3102-9337
magnetics@spang.com
www.mag-inc.com



XFlux Permeability (μ)	A_L (nH/T ²)	Core Marking			Coating Color
		Lot Number	Part Number	Inductance Grade	
75	187 \pm 8%	XXXXXX	78069A7	N/A	Brown

Dimensions	Uncoated		Coated Limits		Packaging
	(mm)	(in)	(mm)	(in)	
OD (A)	68.00	2.677	69.42	2.733	Cardboard cut-outs Box Qty= 35 pcs
ID (B)	35.99	1.417	34.67	1.365	
HT (C)	19.99	0.787	21.41	0.843	

Electrical Characteristics			Physical Characteristics						
Watt Loss @ 50 kHz, 100mT max (mW/cm ³)	DC Bias min (oersteds)		Voltage Breakdown wire to wire min (V _{AC})	Break Strength min (kg)	Window Area W _A (mm ²)	Cross Section A _e (mm ²)	Path Length L _e (mm)	Volume V _e (mm ³)	Weight (g)
	80%	50%							
700	63.0	120	2000	181.0	945	314	158	49,700	347

Winding Information					Temperature Rating	
Winding Length Per Turn				Wound Coil Dimensions (mm)		Curie Temp: 700°C
Winding Factor	(mm)	Winding Factor	(mm)	Maximum OD (70%)	89.2	Coating Temp (Continuous up to): 200°C
				Maximum HT (70%)	45.4	
0%	77.5	40%	95.0	Surface Area (mm ²)		Notes:
20%	86.4	45%	97.8	Unwound Core		
25%	88.5	50%	100	12,700		
30%	90.5	60%	105	40% Winding Factor		
35%	93.1	70%	112	18,400		

