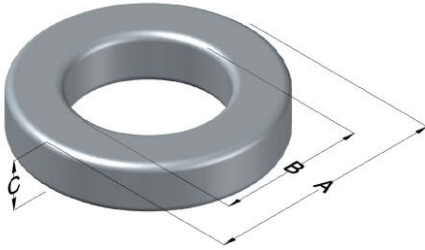




0078067A7

110 Delta Drive
 Pittsburgh, PA 15238
 NAFTA Sales: (1)800-245-3984
 HK Sales : (852)3102-9337
 magnetics@spang.com
 www.mag-inc.com



XFlux Permeability (μ)	A_L (nH/T ²)	Core Marking			Coating Color
		Lot Number	Part Number	Inductance Grade	
19	48 ± 8%	XXXXXX	78067A7	N/A	Brown

Dimensions	Uncoated		Coated Limits			Packaging
	(mm)	(in)	(mm)	(in)		
OD (A)	68.00	2.677	69.42	2.733	max	Cardboard cut-outs Box Qty= 35 pcs
ID (B)	35.99	1.417	34.67	1.365	min	
HT (C)	19.99	0.787	21.41	0.843	max	

Electrical Characteristics			Physical Characteristics						
Watt Loss @ 50 kHz, 50mT max (mW/cm ³)	DC Bias min (oersteds)		Voltage Breakdown wire to wire min (V _{AC})	Break Strength min (kg)	Window Area W _A (mm ²)	Cross Section A _e (mm ²)	Path Length L _e (mm)	Volume V _e (mm ³)	Weight (g)
	230	80%							
	290	565	2000	181.0	945	314	158	49,700	324

Winding Information					Temperature Rating	
Winding Length Per Turn				Wound Coil Dimensions (mm)		Curie Temp: 500°C
Winding Factor	(mm)	Winding Factor	(mm)	40% Winding Factor		Coating Temp (Continuous up to): 200°C
				OD	79.3	Notes:
				HT	37.2	
				Max OD	89.2	
				Max HT	45.4	
0%	77.7	40%	95.7	Surface Area (mm ²)		
20%	86.6	45%	97.9	Unwound Core		
25%	89.0	50%	100.1	12,700		
30%	90.5	60%	106.0	40% Winding Factor		
35%	93.4	70%	112.0	18,400		

