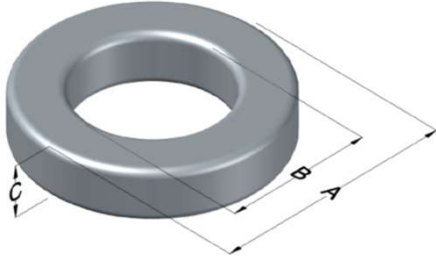




**0077877A7**

110 Delta Drive  
 Pittsburgh, PA 15238  
 NAFTA Sales: (1)800-245-3984  
 HK Sales : (852)3102-9337  
 magnetics@spang.com  
 www.mag-inc.com



Kool M $\mu$ Permeability ( $\mu$ )	A <sub>L</sub> (nH/T <sup>2</sup> )	Core Marking			Coating Color
		Lot Number	Part Number	Inductance Grade	
19	16 ± 12%	XXXXXX	77877A7	N/A	Black

Dimensions	Uncoated		Coated Limits			Packaging
	(mm)	(in)	(mm)	(in)		
OD (A)	6.60	0.260	7.24	0.285	max	Bulk Pack 4 bags/box Box Qty= 10,000 pcs
ID (B)	2.67	0.105	2.16	0.085	min	
HT (C)	4.78	0.188	5.41	0.213	max	

Electrical Characteristics			Physical Characteristics						
Watt Loss @ 100kHz, 100mT max (mW/cm <sup>3</sup> )	DC Bias min (oersteds)		Voltage Breakdown wire to wire min (V <sub>AC</sub> )	Break Strength min (kg)	Window Area W <sub>a</sub> (mm <sup>2</sup> )	Cross Section A <sub>e</sub> (mm <sup>2</sup> )	Path Length L <sub>e</sub> (mm)	Volume V <sub>e</sub> (mm <sup>3</sup> )	Weight (g)
	80%	50%							
1400	125	265	1250	11.3	3.66	9.17	13.6	125	0.78

Winding Information					Temperature Rating	
Winding Length Per Turn				Wound Coil Dimensions (mm)		Curie Temp: 500°C
Winding Factor	(mm)	Winding Factor	(mm)	40% Winding Factor	OD	7.64
					HT	6.21
0%	15.9	40%	17.1	Completely Full Window	Max OD	7.64
20%	16.5	45%	17.2		Max HT	7.01
25%	16.5	50%	17.4	Surface Area (mm <sup>2</sup> )		
30%	16.8	60%	17.7	Unwound Core	230	
35%	16.9	70%	18.2	40% Winding Factor	260	
Coating Temp (Continuous up to): 200°C						
Notes:						

