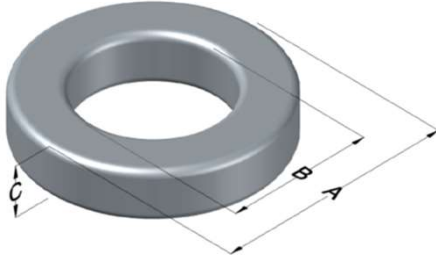




**0077750A7**

110 Delta Drive  
 Pittsburgh, PA 15238  
 NAFTA Sales: (1)800-245-3984  
 HK Sales : (852)3102-9337  
 magnetics@spang.com  
 www.mag-inc.com



Kool M $\mu$ Permeability ( $\mu$ )	A <sub>L</sub> (nH/T <sup>2</sup> )	Core Marking			Coating Color
		Lot Number	Part Number	Inductance Grade	
19	56 ± 8%	XXXXXX	77750A7	N/A	Black

Dimensions	Uncoated		Coated Limits			Packaging
	(mm)	(in)	(mm)	(in)		
OD (A)	50.55	1.990	51.51	2.028	max	Cardboard cut-outs Box Qty= 70 pcs
ID (B)	24.77	0.975	24.00	0.945	min	
HT (C)	20.83	0.820	21.59	0.850	max	

Electrical Characteristics			Physical Characteristics						
Watt Loss @ 100kHz, 100mT max (mW/cm <sup>3</sup> )	DC Bias min (oersteds)		Voltage Breakdown wire to wire min (V <sub>AC</sub> )	Break Strength min (kg)	Window Area W <sub>a</sub> (mm <sup>2</sup> )	Cross Section A <sub>e</sub> (mm <sup>2</sup> )	Path Length L <sub>e</sub> (mm)	Volume V <sub>e</sub> (mm <sup>3</sup> )	Est. Weight (g)
	80%	50%							
1400	125	265	3000	95.0	452	262	114	29,700	157

Winding Information				Temperature Rating			
Winding Length Per Turn				Wound Coil Dimensions (mm)		Curie Temp: 500°C	
Winding Factor	(mm)	Winding Factor	(mm)	40% Winding Factor	OD	56.7	Coating Temp (Continuous up to): 200°C
					HT	29.4	
0%	70.7	40%	83.2	Completely Full Window	Max OD	56.7	Notes:
20%	77.0	45%	85.0		Max HT	39.8	
25%	78.5	50%	86.8	Surface Area (mm <sup>2</sup> )			
30%	79.7	60%	90.5	Unwound Core	8,400		
35%	81.7	70%	94.9	40% Winding Factor	11,000		

