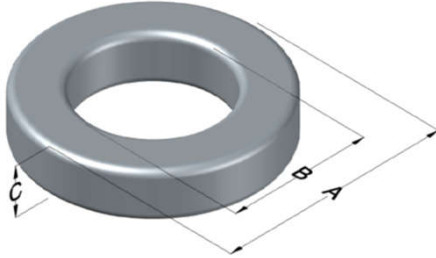




**0077734A7**

110 Delta Drive  
 Pittsburgh, PA 15238  
 NAFTA Sales: (1)800-245-3984  
 HK Sales : (852)3102-9337  
 magnetics@spang.com  
 www.mag-inc.com



Kool M $\mu$ Permeability ( $\mu$ )	A <sub>L</sub> (nH/T <sup>2</sup> )	Core Marking			Coating Color
		Lot Number	Part Number	Inductance Grade	
14	48 ± 8%	XXXXXX	77734A7	N/A	Black

Dimensions	Uncoated		Coated Limits			Packaging
	(mm)	(in)	(mm)	(in)		
OD (A)	74.09	2.917	75.21	2.961	max	Cardboard cut-outs Box Qty= 24 pcs
ID (B)	45.29	1.783	44.40	1.748	min	
HT (C)	35.00	1.378	35.92	1.414	max	

Electrical Characteristics			Physical Characteristics						
Watt Loss @ 100kHz, 100mT max (mW/cm <sup>3</sup> )	DC Bias min (oersteds)		Voltage Breakdown wire to wire min (V <sub>AC</sub> )	Break Strength min (kg)	Window Area W <sub>a</sub> (mm <sup>2</sup> )	Cross Section A <sub>e</sub> (mm <sup>2</sup> )	Path Length L <sub>e</sub> (mm)	Volume V <sub>e</sub> (mm <sup>3</sup> )	Est. Weight (g)
	80%	50%							
1200	175	350	3000	227.0	1,550	497	183.8	91,400	477

Winding Information					Temperature Rating	
Winding Length Per Turn				Wound Coil Dimensions (mm)		Curie Temp: 500°C
Winding Factor	(mm)	Winding Factor	(mm)	40% Winding Factor	OD	84.4
					HT	49.7
0%	103	40%	125	Completely Full Window	Max OD	89.0
20%	114	45%	129		Max HT	68.1
25%	117	50%	132	Surface Area (mm <sup>2</sup> )		
30%	119	60%	139	Unwound Core		19,000
35%	123	70%	147	40% Winding Factor		28,000
Notes:						
Coating Temp (Continuous up to): 200°C						

