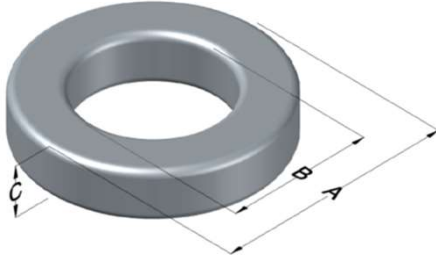




0077728A7

110 Delta Drive
 Pittsburgh, PA 15238
 NAFTA Sales: (1)800-245-3984
 HK Sales : (852)3102-9337
 magnetics@spang.com
 www.mag-inc.com



Kool M μ Permeability (μ)	A _L (nH/T ²)	Core Marking			Coating Color
		Lot Number	Part Number	Inductance Grade	
14	41 ± 8%	XXXXXX	77728A7	N/A	Black

Dimensions	Uncoated		Coated Limits			Packaging
	(mm)	(in)	(mm)	(in)		
OD (A)	50.55	1.990	51.51	2.028	max	Cardboard cut-outs Box Qty= 70 pcs
ID (B)	24.77	0.975	24.00	0.945	min	
HT (C)	20.83	0.820	21.59	0.850	max	

Electrical Characteristics			Physical Characteristics						
Watt Loss @ 100kHz, 100mT max (mW/cm ³)	DC Bias min (oersteds)		Voltage Breakdown wire to wire min (V _{AC})	Break Strength min (kg)	Window Area W _a (mm ²)	Cross Section A _e (mm ²)	Path Length L _e (mm)	Volume V _e (mm ³)	Est. Weight (g)
	80%	50%							
1200	175	350	3000	95.0	452	262	114	29,700	156

Winding Information				Temperature Rating		
Winding Length Per Turn				Wound Coil Dimensions (mm)		Curie Temp: 500°C
Winding Factor	(mm)	Winding Factor	(mm)	40% Winding Factor	OD	56.7
					HT	29.4
0%	70.7	40%	83.2	Completely Full Window	Max OD	56.7
20%	77.0	45%	85.0		Max HT	39.8
25%	78.5	50%	86.8	Surface Area (mm ²)		
30%	79.7	60%	90.5	Unwound Core		8,400
35%	81.7	70%	94.9	40% Winding Factor		11,000
Notes:						
Coating Temp (Continuous up to): 200°C						

