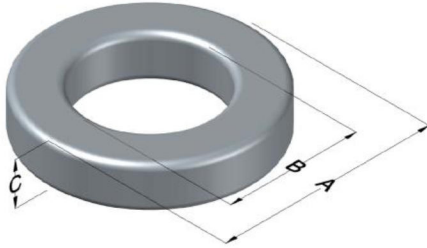




0077591A7

110 Delta Drive
 Pittsburgh, PA 15238
 NAFTA Sales: (1)800-245-3984
 HK Sales : (852)3102-9337
 magnetics@spang.com
 www.mag-inc.com



Kool M μ Permeability (μ)	A _L (nH/T ²)	Core Marking			Coating Color
		Lot Number	Part Number	Inductance Grade	
40	25 ± 8%	XXXXXX	77591A7	N/A	Black

Dimensions	Uncoated		Coated Limits			Packaging
	(mm)	(in)	(mm)	(in)		
OD (A)	34.29	1.350	35.18	1.385	max	Cardboard cut-outs Box Qty= 300 pcs
ID (B)	23.37	0.920	22.56	0.888	min	
HT (C)	8.89	0.350	9.78	0.385	max	

Electrical Characteristics			Physical Characteristics						
Watt Loss @ 100 kHz, 100mT max (mW/cm ³)	DC Bias min (oersteds)		Voltage Breakdown wire to wire min (V _{AC})	Break Strength min (kg)	Window Area W _A (mm ²)	Cross Section A _e (mm ²)	Path Length L _e (mm)	Volume V _e (mm ³)	Weight (g)
	900	80%							
	58.5	133							

Winding Information					Temperature Rating	
Winding Length Per Turn				Wound Coil Dimensions (mm)		Curie Temp: 500°C
Winding Factor	(mm)	Winding Factor	(mm)	40% Winding Factor		Coating Temp (Continuous up to): 200°C
				OD	40.5	Notes:
				HT	16.8	
				Max OD	50.1	
				Max HT	29.0	
0%	32.2	40%	44.0	Surface Area (mm ²)		
20%	38.1	45%	45.6	Unwound Core		
25%	39.6	50%	47.3	2,900		
30%	40.6	60%	50.8	40% Winding Factor		
35%	42.5	70%	54.9	5,500		

