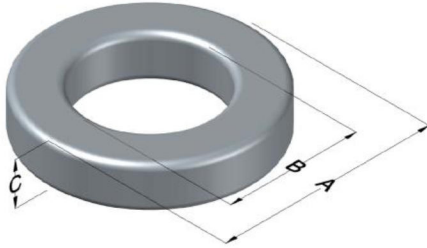




**0077552A9**

110 Delta Drive  
 Pittsburgh, PA 15238  
 NAFTA Sales: (1)800-245-3984  
 HK Sales : (852)3102-9337  
 magnetics@spang.com  
 www.mag-inc.com



Kool M $\mu$ Permeability ( $\mu$ )	A <sub>L</sub> (nH/T <sup>2</sup> )	Core Marking			Coating Color
		Lot Number	Part Number	Inductance Grade	
90	91 ± 8%	XXXXXX	77552A9	N/A	Black

Dimensions	Uncoated		Coated Limits			Packaging
	(mm)	(in)	(mm)	(in)		
OD (A)	33.36	1.313	34.04	1.340	max	Cardboard cut-outs Box Qty= 250 pcs
ID (B)	19.82	0.780	19.07	0.751	min	
HT (C)	11.10	0.437	11.81	0.465	max	

Electrical Characteristics			Physical Characteristics						
Watt Loss @ 100 kHz, 100mT max (mW/cm <sup>3</sup> )	DC Bias min (oersteds)		Voltage Breakdown wire to wire min (V <sub>AC</sub> )	Break Strength min (kg)	Window Area W <sub>A</sub> (mm <sup>2</sup> )	Cross Section A <sub>e</sub> (mm <sup>2</sup> )	Path Length L <sub>e</sub> (mm)	Volume V <sub>e</sub> (mm <sup>3</sup> )	Weight (g)
	750	80%							
	21.0	52.0							

Winding Information					Temperature Rating	
Winding Length Per Turn				Wound Coil Dimensions (mm)		Curie Temp: 500°C
Winding Factor	(mm)	Winding Factor	(mm)	40% Winding Factor		Coating Temp (Continuous up to): 200°C
				OD	36.8	Notes:
				HT	17.8	
				Max OD	46.7	
				Max HT	28.0	
0%	37.1	40%	46.9	Surface Area (mm <sup>2</sup> )		
20%	42.1	45%	48.5	Unwound Core		
25%	43.2	50%	50.0	40% Winding Factor		
30%	44.4	60%	52.8			
35%	45.9	70%	56.3			

