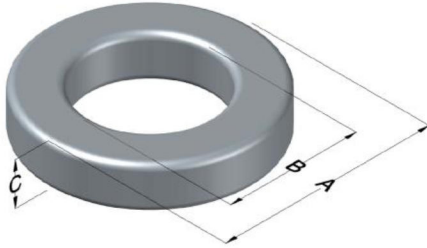




0077552A7

110 Delta Drive
 Pittsburgh, PA 15238
 NAFTA Sales: (1)800-245-3984
 HK Sales : (852)3102-9337
 magnetics@spang.com
 www.mag-inc.com



Kool M μ Permeability (μ)	A _L (nH/T ²)	Core Marking			Coating Color
		Lot Number	Part Number	Inductance Grade	
90	91 ± 8%	XXXXXX	77552A7	N/A	Black

Dimensions	Uncoated		Coated Limits			Packaging
	(mm)	(in)	(mm)	(in)		
OD (A)	32.79	1.291	33.66	1.325	max	Cardboard cut-outs Box Qty= 250 pcs
ID (B)	20.09	0.791	19.46	0.766	min	
HT (C)	10.67	0.420	11.43	0.450	max	

Electrical Characteristics			Physical Characteristics						
Watt Loss @ 100 kHz, 100mT max (mW/cm ³)	DC Bias min (A-T/cm)		Voltage Breakdown wire to wire min (V _{AC})	Break Strength min (kg)	Window Area W _A (mm ²)	Cross Section A _e (mm ²)	Path Length L _e (mm)	Volume V _e (mm ³)	Weight (g)
	750	80%							
	21.0	52.0							

Winding Information					Temperature Rating	
Winding Length Per Turn				Wound Coil Dimensions (mm)		Curie Temp: 500°C
Winding Factor	(mm)	Winding Factor	(mm)	40% Winding Factor		Coating Temp (Continuous up to): 200°C
				OD	36.8	Notes:
				HT	17.8	
				Max OD	46.7	
				Max HT	28.0	
0%	37.1	40%	46.9	Surface Area (mm ²)		
20%	42.1	45%	48.5	Unwound Core		3,100
25%	43.2	50%	50.0	40% Winding Factor		4,900
30%	44.4	60%	52.8			
35%	45.9	70%	56.3			

