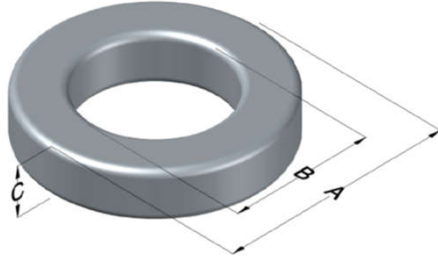




0077446A7

110 Delta Drive
 Pittsburgh, PA 15238
 NAFTA Sales: (1)800-245-3984
 HK Sales : (852)3102-9337
 magnetics@spang.com
 www.mag-inc.com



Kool M μ Permeability (μ)	A _L (nH/T ²)	Core Marking			Coating Color
		Lot Number	Part Number	Inductance Grade	
14	25 ± 8%	XXXXXX	77446A7	N/A	Black

Dimensions	Uncoated		Coated Limits			Packaging
	(mm)	(in)	(mm)	(in)		
OD (A)	42.90	1.689	43.84	1.726	max	Cardboard cut-outs Box Qty = 120 Pcs
ID (B)	24.21	0.953	23.39	0.921	min	
HT (C)	16.26	0.640	17.27	0.680	max	

Electrical Characteristics			Physical Characteristics						
Watt Loss @ 100kHz, 100mT max (mW/cm ³)	DC Bias min (oersteds)		Voltage Breakdown wire to wire min (V _{AC})	Break Strength min (kg)	Window Area W _a (mm ²)	Cross Section A _e (mm ²)	Path Length L _e (mm)	Volume V _e (mm ³)	Est. Weight (g)
	80%	50%							
1200	175	350	3000	98.8	430	148	102.6	15,100	80.2

Winding Information					Temperature Rating	
Winding Length Per Turn				Wound Coil Dimensions (mm)		Curie Temp: 500°C
Winding Factor	(mm)	Winding Factor	(mm)	40% Winding Factor	OD	48.6
					HT	24.5
0%	55.0	40%	66.8	Completely Full Window	Max OD	51.0
20%	61.0	45%	68.6		Max HT	34.1
25%	62.4	50%	70.2	Surface Area (mm ²)		
30%	63.6	60%	73.8	Unwound Core	5,800	
35%	65.5	70%	77.9	40% Winding Factor	8,300	
Coating Temp (Continuous up to): 200°C						
Notes:						

