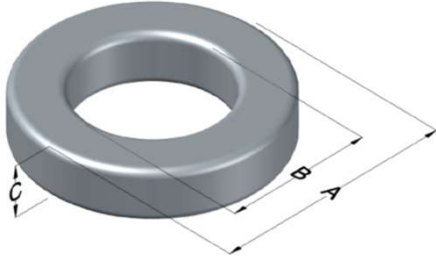




**0077417A7**

110 Delta Drive  
 Pittsburgh, PA 15238  
 NAFTA Sales: (1)800-245-3984  
 HK Sales : (852)3102-9337  
 magnetics@spang.com  
 www.mag-inc.com



Kool M $\mu$ Permeability ( $\mu$ )	A <sub>L</sub> (nH/T <sup>2</sup> )	Core Marking			Coating Color
		Lot Number	Part Number	Inductance Grade	
19	10 $\pm$ 12%	XXXXXX	77417A7	N/A	Black

Dimensions	Uncoated		Coated Limits			Packaging
	(mm)	(in)	(mm)	(in)		
OD (A)	6.86	0.270	7.49	0.295	max	Bulk Pack 4 bags/box Box Qty= 10,000 pcs
ID (B)	3.96	0.156	3.45	0.136	min	
HT (C)	5.08	0.200	5.72	0.225	max	

Electrical Characteristics			Physical Characteristics						
Watt Loss @ 100kHz, 100mT max (mW/cm <sup>3</sup> )	DC Bias min (oersteds)		Voltage Breakdown wire to wire min (V <sub>AC</sub> )	Break Strength min (kg)	Window Area W <sub>a</sub> (mm <sup>2</sup> )	Cross Section A <sub>e</sub> (mm <sup>2</sup> )	Path Length L <sub>e</sub> (mm)	Volume V <sub>e</sub> (mm <sup>3</sup> )	Weight (g)
	80%	50%							
1400	125	265	1250	10.0	9.35	7.14	16.6	118	0.73

Winding Information					Temperature Rating	
Winding Length Per Turn				Wound Coil Dimensions (mm)		Curie Temp: 500°C
Winding Factor	(mm)	Winding Factor	(mm)	40% Winding Factor	OD	7.89
					HT	6.92
0%	15.5	40%	17.3	Completely Full Window	Max OD	8.29
20%	16.3	45%	17.5		Max HT	8.12
25%	16.6	50%	17.8	Surface Area (mm <sup>2</sup> )		Notes:
30%	16.8	60%	18.3	Unwound Core	270	
35%	17.0	70%	18.9	40% Winding Factor	310	
						Coating Temp (Continuous up to): 200°C

