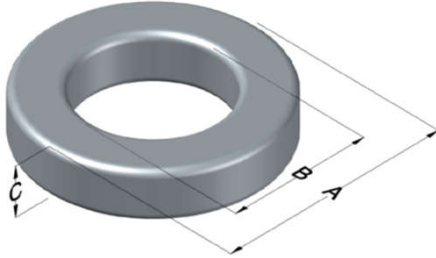




0077413A7

110 Delta Drive
 Pittsburgh, PA 15238
 NAFTA Sales: (1)800-245-3984
 HK Sales : (852)3102-9337
 magnetics@spang.com
 www.mag-inc.com



| Kool M μ Permeability (μ) | A _L (nH/T ²) | Core Marking | | | Coating Color |
|---|--|---------------|----------------|---------------------|------------------|
| | | Lot Number | Part Number | Inductance Grade | |
| 14 | 8 ± 12% | XXXXXX | 77413A7 | N/A | Black |

| Dimensions | Uncoated | | Coated Limits | | | Packaging |
|------------|----------|-------|---------------|-------|-----|--|
| | (mm) | (in) | (mm) | (in) | | |
| OD (A) | 6.86 | 0.270 | 7.49 | 0.295 | max | Bulk Pack 4 bags/box Box Qty= 10,000 pcs |
| ID (B) | 3.96 | 0.156 | 3.45 | 0.136 | min | |
| HT (C) | 5.08 | 0.200 | 5.72 | 0.225 | max | |

| Electrical Characteristics | | | Physical Characteristics | | | | | | |
|---|---------------------------|-----|--|-------------------------------|---|---|---------------------------------------|---|-----------------------|
| Watt Loss @ 100kHz, 100mT max (mW/cm ³) | DC Bias min (oersteds) | | Voltage Breakdown wire to wire min (V _{AC}) | Break Strength min (kg) | Window Area W _a (mm ²) | Cross Section A _e (mm ²) | Path Length L _e (mm) | Volume V _e (mm ³) | Est. Weight (g) |
| | 80% | 50% | | | | | | | |
| 1200 | 175 | 350 | 1250 | 10.0 | 9.35 | 7.25 | 16.6 | 120 | 0.69 |

| Winding Information | | | | | Temperature Rating | |
|--|------|-------------------|------|---------------------------------|--------------------|-------------------|
| Winding Length Per Turn | | | | Wound Coil Dimensions (mm) | | Curie Temp: 500°C |
| Winding Factor | (mm) | Winding Factor | (mm) | 40% Winding Factor | OD | 7.89 |
| | | | | | HT | 6.92 |
| 0% | 15.5 | 40% | 17.3 | Completely Full Window | Max OD | 8.29 |
| 20% | 16.3 | 45% | 17.5 | | Max HT | 8.12 |
| 25% | 16.6 | 50% | 17.8 | Surface Area (mm ²) | | Notes: |
| 30% | 16.8 | 60% | 18.3 | Unwound Core | 270 | |
| 35% | 17.0 | 70% | 18.9 | 40% Winding Factor | 310 | |
| Coating Temp (Continuous up to): 200°C | | | | | | |

