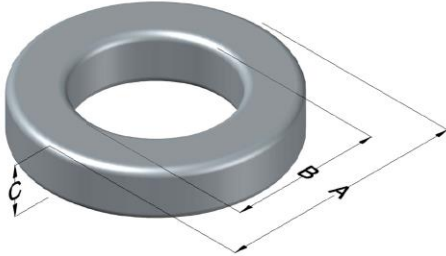




0077314A7

110 Delta Drive
 Pittsburgh, PA 15238
 NAFTA Sales: (1)800-245-3984
 HK Sales : (852)3102-9337
 magnetics@spang.com
 www.mag-inc.com



Kool M μ Permeability (μ)	A _L (nH/T ²)	Core Marking			Coating Color
		Lot Number	Part Number	Inductance Grade	
90	65 ± 8%	XXXXXX	77314A7	N/A	Black

Dimensions	Uncoated		Coated Limits			Packaging
	(mm)	(in)	(mm)	(in)		
OD (A)	22.9	0.900	23.7	0.930	max	Bulk Pack 4 bags/box Box Qty= 1000 pcs
ID (B)	14.0	0.550	13.3	0.525	min	
HT (C)	7.62	0.300	8.39	0.330	max	

Electrical Characteristics			Physical Characteristics						
Watt Loss @ 100 kHz, 100mT max(mW/cm ³)	DC Bias min (oersteds)		Voltage Breakdown wire to wire min (V _{AC})	Break Strength min (kg)	Window Area W _A (mm ²)	Cross Section A _e (mm ²)	Path Length L _e (mm)	Volume V _e (mm ³)	Weight (g)
	80%	50%							
900	19.5	52.0	1000	39.0	139	31.7	56.7	1,800	12

Winding Information					Temperature Rating	
Winding Length Per Turn				Wound Coil Dimensions (mm)		Curie Temp: 500°C
Winding Factor	(mm)	Winding Factor	(mm)	40% Winding Factor		Coating Temp (Continuous up to): 200°C
				OD	25.7	Notes:
				HT	12.4	
				Completely Full Window		
				Max OD	32.6	
				Max HT	19.8	
				Surface Area (mm ²)		
				Unwound Core		1,600
				40% Winding Factor		2,400

