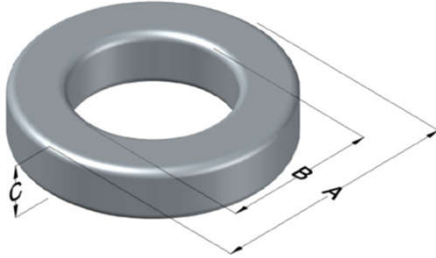




0077243A7

110 Delta Drive
 Pittsburgh, PA 15238
 NAFTA Sales: (1)800-245-3984
 HK Sales : (852)3102-9337
 magnetics@spang.com
 www.mag-inc.com



Kool M μ Permeability (μ)	A _L (nH/T ²)	Core Marking			Coating Color
		Lot Number	Part Number	Inductance Grade	
14	6 ± 12%	XXXXXX	77243A7	N/A	Black

Dimensions	Uncoated		Coated Limits			Packaging
	(mm)	(in)	(mm)	(in)		
OD (A)	6.60	0.260	7.24	0.285	max	Bulk Pack 4 bags/box Box Qty= 10,000 pcs
ID (B)	2.67	0.105	2.16	0.085	min	
HT (C)	2.54	0.100	3.18	0.125	max	

Electrical Characteristics			Physical Characteristics						
Watt Loss @ 100kHz, 100mT max (mW/cm ³)	DC Bias min (oersteds)		Voltage Breakdown wire to wire min (V _{AC})	Break Strength min (kg)	Window Area W _a (mm ²)	Cross Section A _e (mm ²)	Path Length L _e (mm)	Volume V _e (mm ³)	Est. Weight (g)
	80%	50%							
1200	175	350	1250	11.3	3.66	4.76	13.6	65	0.38

Winding Information					Temperature Rating	
Winding Length Per Turn				Wound Coil Dimensions (mm)		Curie Temp: 500°C
Winding Factor	(mm)	Winding Factor	(mm)	40% Winding Factor	OD	7.64
					HT	3.98
0%	11.4	40%	12.6	Completely Full Window	Max OD	7.64
20%	12.1	45%	12.7		Max HT	4.78
25%	12.1	50%	13.0	Surface Area (mm ²)		
30%	12.3	60%	13.3	Unwound Core	170	
35%	12.5	70%	13.7	40% Winding Factor	200	
Coating Temp (Continuous up to): 200°C						
Notes:						

