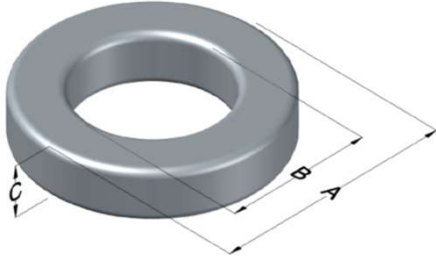




0077230A7

110 Delta Drive
 Pittsburgh, PA 15238
 NAFTA Sales: (1)800-245-3984
 HK Sales : (852)3102-9337
 magnetics@spang.com
 www.mag-inc.com



Kool M μ Permeability (μ)	A _L (nH/T ²)	Core Marking			Coating Color
		Lot Number	Part Number	Inductance Grade	
19	8 ± 12%	XXXXXX	77230A7	N/A	Black

Dimensions	Uncoated		Coated Limits			Packaging
	(mm)	(in)	(mm)	(in)		
OD (A)	11.18	0.440	11.81	0.465	max	Bulk Pack 4 bags/box Box Qty= 6000 pcs
ID (B)	6.35	0.250	5.84	0.230	min	
HT (C)	3.96	0.156	4.60	0.181	max	

Electrical Characteristics			Physical Characteristics						
Watt Loss @ 100kHz, 100mT max (mW/cm ³)	DC Bias min (oersteds)		Voltage Breakdown wire to wire min (V _{AC})	Break Strength min (kg)	Window Area W _a (mm ²)	Cross Section A _e (mm ²)	Path Length L _e (mm)	Volume V _e (mm ³)	Weight (g)
	80%	50%							
1400	125	265	1250	11.8	26.8	9.06	26.8	243	1.49

Winding Information					Temperature Rating	
Winding Length Per Turn				Wound Coil Dimensions (mm)		Curie Temp: 500°C
Winding Factor	(mm)	Winding Factor	(mm)	40% Winding Factor	OD	13.0
					HT	6.40
0%	15.2	40%	18.1	Completely Full Window	Max OD	13.6
20%	16.7	45%	18.6		Max HT	8.80
25%	17.0	50%	19.0	Surface Area (mm ²)		
30%	17.3	60%	19.9	Unwound Core		420
35%	17.8	70%	20.9	40% Winding Factor		580
Notes:						
Coating Temp (Continuous up to): 200°C						

