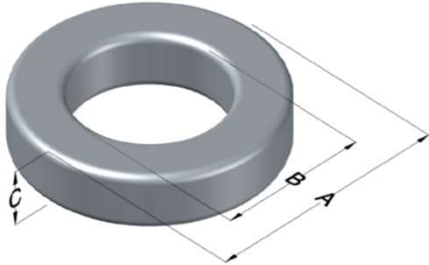




0077163A7

110 Delta Drive
 Pittsburgh, PA 15238
 NAFTA Sales: (1)800-245-3984
 HK Sales : (852)3102-9337
 magnetics@spang.com
 www.mag-inc.com



Kool Mu Permeability (μ)	A_L (nH/T ²)	Core Marking			Coating Color
		Lot Number	Part Number	Inductance Grade	
19	57 \pm 8%	XXXXXX	77163A7	N/A	Black

Dimensions	Uncoated		Coated Limits			Packaging
	(mm)	(in)	(mm)	(in)		
OD (A)	165.10	6.500	166.50	6.555	max	Cardboard cut-outs Box Qty= 6 pcs
ID (B)	102.41	4.032	101.02	3.977	min	
HT (C)	31.75	1.250	33.15	1.305	max	

Electrical Characteristics			Physical Characteristics						
Watt Loss @ 100kHz, 100mT max (mW/cm ³)	DC Bias min (oersteds)		Voltage Breakdown wire to wire min (V _{AC})	Break Strength min (kg)	Window Area W _a (mm ²)	Cross Section A _e (mm ²)	Path Length L _e (mm)	Volume V _e (mm ³)	Weight (g)
	80%	50%							
1400	125	265	3000	227.0	8,020	990	412.4	408,000	2,200

Winding Information					Temperature Rating	
Winding Length Per Turn				Wound Coil Dimensions (mm)		Curie Temp: 500°C
Winding Factor	(mm)	Winding Factor	(mm)	40% Winding Factor	OD	187
					HT	63.8
0%	132	40%	183	Completely Full Window	Max OD	197
20%	158	45%	191		Max HT	105
25%	164	50%	198	Surface Area (mm ²)		
30%	169	60%	213	Unwound Core	55,000	
35%	177	70%	231	40% Winding Factor	99,000	
Notes:						
Coating Temp (Continuous up to): 200°C						

