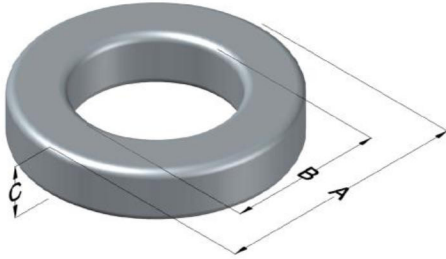




0077130A7

110 Delta Drive
 Pittsburgh, PA 15238
 NAFTA Sales: (1)800-245-3984
 HK Sales : (852)3102-9337
 magnetics@spang.com
 www.mag-inc.com



Kool M μ Permeability (μ)	A _L (nH/T ²)	Core Marking			Coating Color
		Lot Number	Part Number	Inductance Grade	
125	53 ± 12%	XXXXXX	130A7	N/A	Black

Dimensions	Uncoated		Coated Limits			Packaging
	(mm)	(in)	(mm)	(in)		
OD (A)	11.18	0.440	11.81	0.465	max	Bulk Pack 4 bags/box Box Qty= 6000 pcs
ID (B)	6.35	0.250	5.84	0.230	min	
HT (C)	3.96	0.156	4.60	0.181	max	

Electrical Characteristics			Physical Characteristics						
Watt Loss @ 100 kHz, 100mT max(mW/cm ³)	DC Bias min (oersteds)		Voltage Breakdown wire to wire min (V _{AC})	Break Strength min (kg)	Window Area W _A (mm ²)	Cross Section A _e (mm ²)	Path Length L _e (mm)	Volume V _e (mm ³)	Weight (g)
	80%	50%							
750	14.0	35.0	1250	12.0	26.8	9.06	26.9	244	1.5000

Winding Information					Temperature Rating	
Winding Length Per Turn				Wound Coil Dimensions (mm)		Curie Temp: 500°C
Winding Factor	(mm)	Winding Factor	(mm)	40% Winding Factor		Coating Temp (Continuous up to): 200°C
				OD	12.9	Notes:
				HT	6.53	
				Completely Full Window		
				Max OD	15.7	
				Max HT	8.97	
				Surface Area (mm ²)		
				Unwound Core		420
				40% Winding Factor		600

