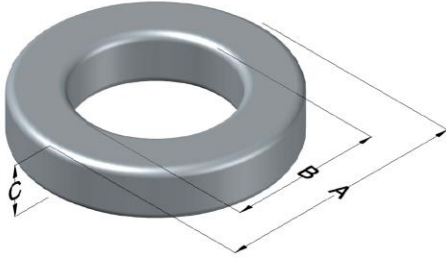




0077100A7

110 Delta Drive
 Pittsburgh, PA 15238
 NAFTA Sales: (1)800-245-3984
 HK Sales : (852)3102-9337
 magnetics@spang.com
 www.mag-inc.com



Kool M μ Permeability (μ)	A _L (nH/T ²)	Core Marking			Coating Color
		Lot Number	Part Number	Inductance Grade	
40	74 ± 8%	XXXXXX	77100A7	N/A	Black

Dimensions	Uncoated		Coated Limits			Packaging
	(mm)	(in)	(mm)	(in)		
OD (A)	101.6	4.000	103.0	4.055	max	Cardboard cut-outs Box Qty= 25 pcs
ID (B)	57.20	2.252	55.75	2.195	min	
HT (C)	16.5	0.650	17.9	0.705	max	

Electrical Characteristics			Physical Characteristics						
Watt Loss @ 100 kHz, 100mT Max (mW/cm ³)	DC Bias min (oersteds)		Voltage Breakdown wire to wire min (V _{AC})	Break Strength min (kg)	Window Area W _A (mm ²)	Cross Section A _e (mm ²)	Path Length L _e (mm)	Volume V _e (mm ³)	Weight (g)
	900	80%							
	58.5	133							

Winding Information				Temperature Rating			
Winding Length Per Turn				Wound Coil Dimensions (mm)		Curie Temp: 500°C	
Winding Factor	(mm)	Winding Factor	(mm)	40% Winding Factor	OD	112	Coating Temp (Continuous up to): 200°C
					HT	34.9	
0%	82.2	40%	111	Completely Full Window	Max OD	136	Notes:
20%	96.8	45%	116		Max HT	55.1	
25%	100	50%	120	Surface Area (mm ²)			
30%	103	60%	128	Unwound Core		20,000	
35%	108	70%	139	40% Winding Factor		36,000	

