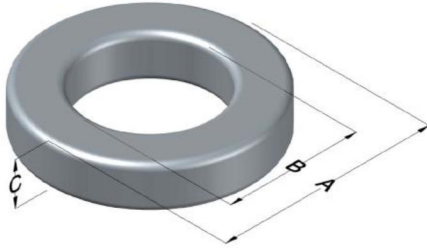




**0077071A7HT15**

110 Delta Drive  
 Pittsburgh, PA 15238  
 NAFTA Sales: (1)800-245-3984  
 HK Sales : (852)3102-9337  
 magnetics@spang.com  
 www.mag-inc.com



Kool M $\mu$ Permeability ( $\mu$ )	A <sub>L</sub> (nH/T <sup>2</sup> )	Core Marking			Coating Color
		Lot Number	Part Number	Inductance Grade	
60	80 $\pm$ 8%	XXXXXX	77071A7HT15	N/A	Black

Dimensions	Uncoated		Coated Limits			Packaging
	(mm)	(in)	(mm)	(in)		
OD (A)	32.79	1.291	33.66	1.325	max	Cardboard cut-outs Box Qty= 175 pcs
ID (B)	20.09	0.791	19.46	0.766	min	
HT (C)	14	0.551	15	0.590	max	

Electrical Characteristics			Physical Characteristics						
Watt Loss @ 100 kHz, 100mT max (mW/cm <sup>3</sup> )	DC Bias min (oersteds)		Voltage Breakdown wire to wire min (V <sub>AC</sub> )	Break Strength min (kg)	Window Area W <sub>A</sub> (mm <sup>2</sup> )	Cross Section A <sub>e</sub> (mm <sup>2</sup> )	Path Length L <sub>e</sub> (mm)	Volume V <sub>e</sub> (mm <sup>3</sup> )	Weight (g)
	750	80%							
	39	87							

Winding Information					Temperature Rating			
Winding Length Per Turn				Wound Coil Dimensions (mm)			Curie Temp: 500°C	
Winding Factor	(mm)	Winding Factor	(mm)	40% Winding Factor		OD	36.8	Coating Temp (Continuous up to): 200°C
				HT	21.3			
0%	44.3	40%	54.2	Completely Full Window		Max OD	46.7	Notes:
20%	49.2	45%	55.5			Max HT	31.5	
25%	50.3	50%	56.9	Surface Area (mm <sup>2</sup> )				
30%	51.6	60%	60.0	Unwound Core		3,700		
35%	52.8	70%	63.4	40% Winding Factor		5,800		

