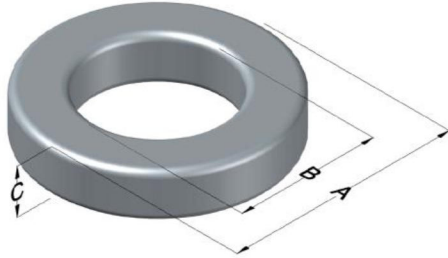




0077069A7

110 Delta Drive
 Pittsburgh, PA 15238
 NAFTA Sales: (1)800-245-3984
 HK Sales : (852)3102-9337
 magnetics@spang.com
 www.mag-inc.com



Kool M μ Permeability (μ)	A _L (nH/T ²)	Core Marking			Coating Color
		Lot Number	Part Number	Inductance Grade	
75	187 ± 8%	XXXXXX	77069A7	N/A	Black

Dimensions	Uncoated		Coated Limits		Packaging
	(mm)	(in)	(mm)	(in)	
OD (A)	68.00	2.677	69.42	2.733	Cardboard cut-outs Box Qty= 35 pcs
ID (B)	35.99	1.417	34.67	1.365	
HT (C)	19.99	0.787	21.41	0.843	

Electrical Characteristics			Physical Characteristics						
Watt Loss @ 100 kHz, 100mT max (mW/cm ³)	DC Bias min (oersteds)		Voltage Breakdown wire to wire min (V _{AC})	Break Strength min (kg)	Window Area W _A (mm ²)	Cross Section A _e (mm ²)	Path Length L _e (mm)	Volume V _e (mm ³)	Weight (g)
	750	80%							
	28	64	3000	181.0	945	314	158	49,700	296

Winding Information						Temperature Rating	
Winding Length Per Turn				Wound Coil Dimensions (mm)		Curie Temp: 500°C	
Winding Factor	(mm)	Winding Factor	(mm)	40% Winding Factor	OD	74.7	
					HT	37.4	
0%	77.6	40%	95.1	Completely Full Window	Max OD	92.7	
					Max HT	50.6	
20%	86.6	45%	98.0	Surface Area (mm ²)			
25%	88.6	50%	101				
30%	90.7	60%	106	Unwound Core		12,700	
35%	93.2	70%	112	40% Winding Factor		19,000	
						Coating Temp (Continuous up to): 200°C	
						Notes:	

