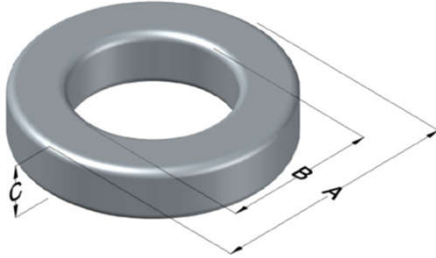




0077043A7

110 Delta Drive
 Pittsburgh, PA 15238
 NAFTA Sales: (1)800-245-3984
 HK Sales : (852)3102-9337
 magnetics@spang.com
 www.mag-inc.com



Kool M μ Permeability (μ)	A _L (nH/T ²)	Core Marking			Coating Color
		Lot Number	Part Number	Inductance Grade	
14	7 ± 12%	XXXXXX	77043A7	N/A	Black

Dimensions	Uncoated		Coated Limits			Packaging
	(mm)	(in)	(mm)	(in)		
OD (A)	10.16	0.400	10.80	0.425	max	Bulk Pack 4 bags/box Box Qty= 8000 pcs
ID (B)	5.08	0.200	4.57	0.180	min	
HT (C)	3.96	0.156	4.60	0.181	max	

Electrical Characteristics			Physical Characteristics						
Watt Loss @ 100kHz, 100mT max (mW/cm ³)	DC Bias min (oersteds)		Voltage Breakdown wire to wire min (V _{AC})	Break Strength min (kg)	Window Area W _a (mm ²)	Cross Section A _e (mm ²)	Path Length L _e (mm)	Volume V _e (mm ³)	Est. Weight (g)
	80%	50%							
1200	175	350	1250	12.2	16.4	9.56	23.0	220	1.24

Winding Information					Temperature Rating	
Winding Length Per Turn				Wound Coil Dimensions (mm)		Curie Temp: 500°C
Winding Factor	(mm)	Winding Factor	(mm)	40% Winding Factor	OD	11.4
					HT	6.40
0%	15.4	40%	17.8	Completely Full Window	Max OD	12.0
20%	16.5	45%	18.2		Max HT	8.20
25%	17.0	50%	18.5	Surface Area (mm ²)		
30%	17.2	60%	19.2	Unwound Core	370	
35%	17.5	70%	20.1	40% Winding Factor	480	
Coating Temp (Continuous up to): 200°C						
Notes:						

