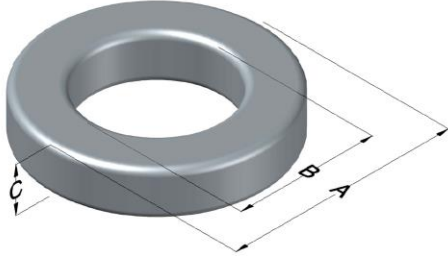




0077030A7

110 Delta Drive
 Pittsburgh, PA 15238
 NAFTA Sales: (1)800-245-3984
 HK Sales : (852)3102-9337
 magnetics@spang.com
 www.mag-inc.com



Kool M μ Permeability (μ)	A _L (nH/T ²)	Core Marking			Coating Color
		Lot Number	Part Number	Inductance Grade	
125	52 ± 12%	XXXXXX	030A7	N/A	Black

Dimensions	Uncoated		Coated Limits			Packaging
	(mm)	(in)	(mm)	(in)		
OD (A)	7.87	0.310	8.51	0.335	max	Bulk Pack 4 bags/box Box Qty= 10,000 pcs
ID (B)	3.96	0.156	3.45	0.136	min	
HT (C)	3.18	0.125	3.81	0.150	max	

Electrical Characteristics			Physical Characteristics						
Watt Loss @ 100 kHz, 100mT max(mW/cm ³)	DC Bias min (oersteds)		Voltage Breakdown wire to wire min (V _{AC})	Break Strength min (kg)	Window Area W _A (mm ²)	Cross Section A _e (mm ²)	Path Length L _e (mm)	Volume V _e (mm ³)	Weight (g)
	1000	80%							
	13.5	35.0							

Winding Information					Temperature Rating			
Winding Length Per Turn				Wound Coil Dimensions (mm)			Curie Temp: 500°C	
Winding Factor	(mm)	Winding Factor	(mm)	40% Winding Factor	OD	9.07		
					HT	4.93		
0%	12.7	40%	14.5	Completely Full Window	Max OD	11.0		
20%	13.6	45%	14.7		Max HT	6.73		
25%	13.8	50%	15.0	Surface Area (mm ²)				
30%	14.0	60%	15.5					
35%	14.3	70%	16.1					
Unwound Core					240			
40% Winding Factor					310			
Notes:								
Coating Temp (Continuous up to): 200°C								

