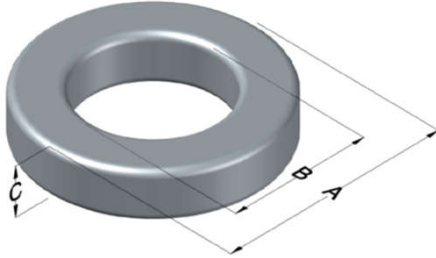




**0077023A7**

110 Delta Drive  
 Pittsburgh, PA 15238  
 NAFTA Sales: (1)800-245-3984  
 HK Sales : (852)3102-9337  
 magnetics@spang.com  
 www.mag-inc.com



Kool M $\mu$ Permeability ( $\mu$ )	A <sub>L</sub> (nH/T <sup>2</sup> )	Core Marking			Coating Color
		Lot Number	Part Number	Inductance Grade	
14	6 ± 12%	XXXXXX	77023A7	N/A	Black

Dimensions	Uncoated		Coated Limits			Packaging
	(mm)	(in)	(mm)	(in)		
OD (A)	6.35	0.250	6.99	0.275	max	Bulk Pack 4 bags/box Box Qty= 10,000 pcs
ID (B)	2.79	0.110	2.29	0.090	min	
HT (C)	2.79	0.110	3.43	0.135	max	

Electrical Characteristics			Physical Characteristics						
Watt Loss @ 100kHz, 100mT max (mW/cm <sup>3</sup> )	DC Bias min (oersteds)		Voltage Breakdown wire to wire min (V <sub>AC</sub> )	Break Strength min (kg)	Window Area W <sub>a</sub> (mm <sup>2</sup> )	Cross Section A <sub>e</sub> (mm <sup>2</sup> )	Path Length L <sub>e</sub> (mm)	Volume V <sub>e</sub> (mm <sup>3</sup> )	Est. Weight (g)
	80%	50%							
1200	175	350	1250	7.3	4.12	4.70	13.6	64	0.38

Winding Information					Temperature Rating	
Winding Length Per Turn				Wound Coil Dimensions (mm)		Curie Temp: 500°C
Winding Factor	(mm)	Winding Factor	(mm)	40% Winding Factor	OD	7.39
					HT	4.23
0%	11.6	40%	12.8	Completely Full Window	Max OD	7.39
20%	12.2	45%	12.9		Max HT	5.03
25%	12.2	50%	13.2	Surface Area (mm <sup>2</sup> )		Notes:
30%	12.5	60%	13.5	Unwound Core	170	
35%	12.7	70%	13.9	40% Winding Factor	200	
Coating Temp (Continuous up to): 200°C						

