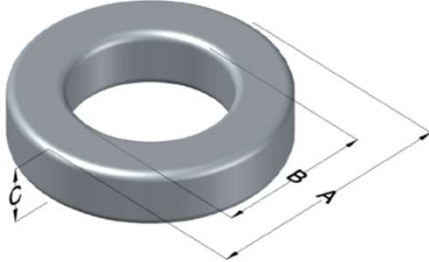




**0076894A7HT15**

110 Delta Drive  
 Pittsburgh, PA 15238  
 NAFTA Sales: (1)800-245-3984  
 HK Sales : (852)3102-9337  
 magnetics@spang.com  
 www.mag-inc.com



Kool M $\mu$ Hf Permeability ( $\mu$ )	A <sub>L</sub> (nH/T <sup>2</sup> )	Core Marking			Coating Color
		Lot Number	Part Number	Inductance Grade	
60	94 $\pm$ 8%	XXXXXX	76894A7HT15	N/A	Black

Dimensions	Uncoated		Coated Limits			Packaging
	(mm)	(in)	(mm)	(in)		
OD (A)	26.92	1.060	27.69	1.090	max	Cardboard cut-outs Box Qty = TBD
ID (B)	14.73	0.580	14.10	0.555	min	
HT (C)	13.99	0.551	15.00	0.591	max	

Electrical Characteristics			Physical Characteristics						
Watt Loss @ 100kHz, 100mT max (mW/cm <sup>3</sup> )	DC Bias min (oersteds)		Voltage Breakdown wire to wire min (V <sub>AC</sub> )	Break Strength min (kg)	Window Area W <sub>a</sub> (mm <sup>2</sup> )	Cross Section A <sub>e</sub> (mm <sup>2</sup> )	Path Length L <sub>e</sub> (mm)	Volume V <sub>e</sub> (mm <sup>3</sup> )	Weight (g)
	80%	50%							
450	45	100	3000	77.0	156	82.5	63.5	5,240	34.7

Winding Information					Temperature Rating	
Winding Length Per Turn				Wound Coil Dimensions (mm)		Curie Temp: 500°C
Winding Factor	(mm)	Winding Factor	(mm)	40% Winding Factor		Coating Temp (Continuous up to): 200°C
				OD	30.9	
				HT	19.8	Notes:
0%	43.6	40%	50.9	Max OD	30.9	
				Max HT	24.6	
20%	47.2	45%	51.8	Surface Area (mm <sup>2</sup> )		
25%	48.2	50%	53.0			
30%	48.9	60%	55.1	Unwound Core		
35%	49.9	70%	57.6	40% Winding Factor		3,900

