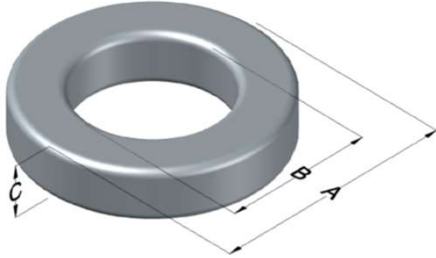




0076721A7

110 Delta Drive
 Pittsburgh, PA 15238
 NAFTA Sales: (1)800-245-3984
 HK Sales : (852)3102-9337
 magnetics@spang.com
 www.mag-inc.com



Kool M μ Hf Permeability (μ)	A _L (nH/T ²)	Core Marking			Coating Color
		Lot Number	Part Number	Inductance Grade	
40	49 ± 8%	XXXXXX	76721A7	N/A	Black

Dimensions	Uncoated		Coated Limits			Packaging
	(mm)	(in)	(mm)	(in)		
OD (A)	50.80	2.000	51.69	2.035	max	Cardboard cut-outs Box Qty= 90 pcs
ID (B)	31.75	1.250	30.94	1.218	min	
HT (C)	13.46	0.530	14.35	0.565	max	

Electrical Characteristics			Physical Characteristics						
Watt Loss @ 100kHz, 100mT max (mW/cm ³)	DC Bias min (oersteds)		Voltage Breakdown wire to wire min (V _{AC})	Break Strength min (kg)	Window Area W _a (mm ²)	Cross Section A _e (mm ²)	Path Length L _e (mm)	Volume V _e (mm ³)	Weight (g)
	80%	50%							
550	75	145	3000	93.0	752	123	127.3	15,600	101

Winding Information					Temperature Rating	
Winding Length Per Turn				Wound Coil Dimensions (mm)		Curie Temp: 500°C
Winding Factor	(mm)	Winding Factor	(mm)	40% Winding Factor	OD	58.1
					HT	24.0
0%	49.5	40%	65.3	Completely Full Window	Max OD	61.3
20%	57.5	45%	67.8		Max HT	36.8
25%	59.4	50%	69.8	Surface Area (mm ²)		
30%	61.1	60%	74.7	Unwound Core		6,400
35%	63.5	70%	80.3	40% Winding Factor		11,000
Notes:						
Coating Temp (Continuous up to): 200°C						

