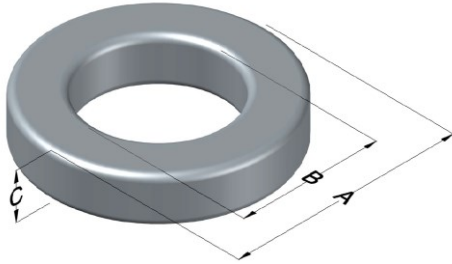




0076586A7

110 Delta Drive
 Pittsburgh, PA 15238
 NAFTA Sales: (1)800-245-3984
 HK Sales : (852)3102-9337
 magnetics@spang.com
 www.mag-inc.com



Kool M μ Hf Permeability (μ)	A _L (nH/T ²)	Core Marking			Coating Color
		Lot Number	Part Number	Inductance Grade	
60	38 ± 8%	XXXXXX	76586A7	N/A	Black

Dimensions					Packaging	
Uncoated			Coated Limits			
	(mm)	(in)	(mm)	(in)		
OD (A)	34.29	1.350	35.18	1.385	max	Cardboard cut-outs Box Qty = 300 Pcs
ID (B)	23.37	0.920	22.56	0.888	min	
HT (C)	8.89	0.350	9.78	0.385	max	

Electrical Characteristics			Physical Characteristics						
Watt Loss @ 100kHz, 100mT (max, mW/cm ³)	DC Bias min (Oersteds)		Voltage Breakdown wire-to-wire min (V _{AC})	Break Strength (min, kg)	Window Area, W _A (mm ²)	Cross Section, A _e (mm ²)	Path Length, L _e (mm)	Volume V _e (mm ³)	Weight (g)
	80%	50%							
525	45	100	2000	53.5	399	46.4	89.5	4150	26.9

Winding Information					Temperature Rating		
Winding Length per Turn			Wound Coil Dimensions (mm)			Curie Temp (°C):	500 °C
Winding Factor	(mm)	Winding Factor	(mm)	40% Winding Factor	OD	HT	Coating Temp: (Continuous, up to; °C)
0%	32.2	40%	44.0	Completely Full Window	Max OD	50.1	200 °C
20%	38.1	45%	45.6		Max HT	29.0	
25%	39.6	50%	47.3	Surface Area (mm ²)			Notes:
30%	40.6	60%	50.8	Unwound Core:	2900		
35%	42.5	70%	54.9	40% Wound:	5500		

