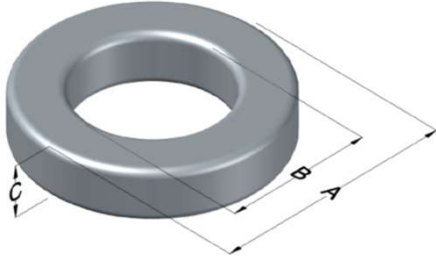




0076391A7

110 Delta Drive
 Pittsburgh, PA 15238
 NAFTA Sales: (1)800-245-3984
 HK Sales : (852)3102-9337
 magnetics@spang.com
 www.mag-inc.com



Kool M μ Hf Permeability (μ)	A _L (nH/T ²)	Core Marking			Coating Color
		Lot Number	Part Number	Inductance Grade	
40	81 ± 8%	XXXXXX	76391A7	N/A	Black

Dimensions	Uncoated		Coated Limits			Packaging
	(mm)	(in)	(mm)	(in)		
OD (A)	40.13	1.580	40.94	1.612	max	Cardboard cut-outs Box Qty= 160 pcs
ID (B)	22.08	0.869	21.27	0.837	min	
HT (C)	17.00	0.669	17.89	0.704	max	

Electrical Characteristics			Physical Characteristics						
Watt Loss @ 100kHz, 100mT max (mW/cm ³)	DC Bias min (oersteds)		Voltage Breakdown wire to wire min (V _{AC})	Break Strength min (kg)	Window Area W _a (mm ²)	Cross Section A _e (mm ²)	Path Length L _e (mm)	Volume V _e (mm ³)	Weight (g)
	80%	50%							
550	75	145	3000	450.0	355	153	94.9	14,600	90.9

Winding Information					Temperature Rating	
Winding Length Per Turn				Wound Coil Dimensions (mm)		Curie Temp: 500°C
Winding Factor	(mm)	Winding Factor	(mm)	40% Winding Factor	OD	45.3
					HT	24.5
0%	55.5	40%	66.4	Completely Full Window	Max OD	47.5
20%	61.0	45%	68.1		Max HT	33.3
25%	62.3	50%	69.5	Surface Area (mm ²)		
30%	63.5	60%	72.8	Unwound Core	5,400	
35%	65.1	70%	76.7	40% Winding Factor	7,500	
Notes:						
Coating Temp (Continuous up to): 200°C						

