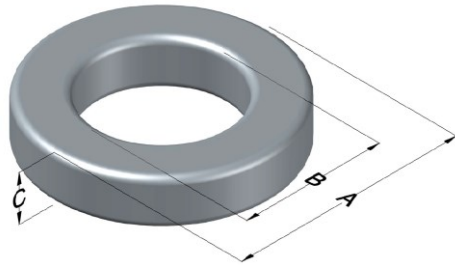




**0076352A7**

110 Delta Drive  
 Pittsburgh, PA 15238  
 NAFTA Sales: (1)800-245-3984  
 HK Sales : (852)3102-9337  
 magnetics@spang.com  
 www.mag-inc.com



Kool Mu Hf Permeability ( $\mu$ )	$A_L$ (nH/T <sup>2</sup> )	Core Marking			Coating Color
		Lot Number	Part Number	Inductance Grade	
26	22 ± 8%	XXXXXX	76352A7	N/A	Black

Dimensions					Packaging	
Uncoated			Coated Limits			Cardboard cut-outs Box Qty = 720 Pcs
	(mm)	(in)	(mm)	(in)		
OD (A)	23.57	0.928	24.33	0.958	max	
ID (B)	14.40	0.567	13.77	0.542	min	
HT (C)	8.89	0.350	9.65	0.380	max	

Electrical Characteristics			Physical Characteristics						
Watt Loss @ 100kHz, 100mT (max, mW/cm <sup>3</sup> )	DC Bias min (Oersteds)		Voltage Breakdown wire-to-wire min (V <sub>AC</sub> )	Break Strength (min, kg)	Window Area, W <sub>A</sub> (mm <sup>2</sup> )	Cross Section, A <sub>e</sub> (mm <sup>2</sup> )	Path Length, L <sub>e</sub> (mm)	Volume V <sub>e</sub> (mm <sup>3</sup> )	Weight (g)
	80%	50%							
625	130	245	1000	47.1	147	38.8	58.8	2280	13.4

Winding Information					Temperature Rating			
Winding Length per Turn			Wound Coil Dimensions (mm)			Curie Temp (°C):		500 °C
Winding Factor	(mm)	Winding Factor	(mm)	40% Winding Factor	OD	HT	Coating Temp: (Continuous, up to; °C)	200 °C
0%	29.8	40%	36.9	Completely Full Window	Max OD	33.5	Notes:	
20%	33.4	45%	38.0		Max HT	21.4		
25%	34.2	50%	38.9	Surface Area (mm <sup>2</sup> )				
30%	35.0	60%	41.1	Unwound Core:	1800			
35%	36.1	70%	43.6	40% Wound:	2700			

