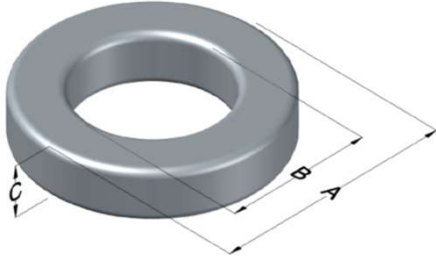




0076189A7

110 Delta Drive
 Pittsburgh, PA 15238
 NAFTA Sales: (1)800-245-3984
 HK Sales : (852)3102-9337
 magnetics@spang.com
 www.mag-inc.com



Kool M μ Hf Permeability (μ)	A _L (nH/T ²)	Core Marking			Coating Color
		Lot Number	Part Number	Inductance Grade	
40	92 \pm 8%	XXXXXX	76189A7	N/A	Black

Dimensions	Uncoated		Coated Limits			Packaging
	(mm)	(in)	(mm)	(in)		
OD (A)	57.15	2.250	58.04	2.285	max	Cardboard cut-outs Box Qty= 80 pcs
ID (B)	26.39	1.039	25.58	1.007	min	
HT (C)	15.24	0.600	16.13	0.635	max	

Electrical Characteristics			Physical Characteristics						
Watt Loss @ 100kHz, 100mT max (mW/cm ³)	DC Bias min (oersteds)		Voltage Breakdown wire to wire min (V _{AC})	Break Strength min (kg)	Window Area W _a (mm ²)	Cross Section A _e (mm ²)	Path Length L _e (mm)	Volume V _e (mm ³)	Weight (g)
	80%	50%							
550	75	145	3000	163.0	514	229	125.1	28,600	185

Winding Information					Temperature Rating	
Winding Length Per Turn				Wound Coil Dimensions (mm)		Curie Temp: 500°C
Winding Factor	(mm)	Winding Factor	(mm)	40% Winding Factor	OD	63.2
					HT	23.9
0%	64.7	40%	77.8	Completely Full Window	Max OD	63.2
20%	71.4	45%	79.9		Max HT	34.3
25%	72.9	50%	81.6	Surface Area (mm ²)		
30%	74.4	60%	85.7	Unwound Core	8,500	
35%	76.3	70%	90.3	40% Winding Factor	12,000	
Notes:						
Coating Temp (Continuous up to): 200°C						

