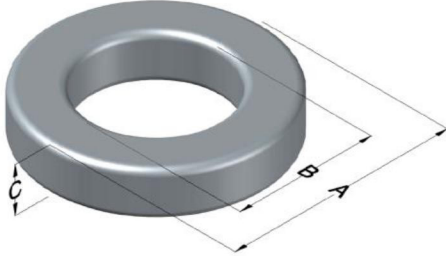




0075072A7

110 Delta Drive
 Pittsburgh, PA 15238
 NAFTA Sales: (1)800-245-3984
 HK Sales : (852)3102-9337
 magnetics@spang.com
 www.mag-inc.com



75 Material Permeability (μ)	A_L (nH/T ²)	Core Marking			Coating Color
		Lot Number	Part Number	Inductance Grade	
60	143 \pm 8%	XXXXXX	75072A7	N/A	Black

Dimensions	Uncoated		Coated Limits			Packaging
	(mm)	(in)	(mm)	(in)		
OD (A)	68.00	2.677	69.42	2.733	max	Cardboard cut-outs Box Qty= 35 pcs
ID (B)	35.99	1.417	34.67	1.365	min	
HT (C)	19.99	0.787	21.41	0.843	max	

Electrical Characteristics			Physical Characteristics						
Watt Loss @ 50 kHz, 100mT Max (mW/cm ³)	DC Bias min (oersteds)		Voltage Breakdown wire to wire min (V _{AC})	Break Strength min (kg)	Window Area W _A (mm ²)	Cross Section A _e (mm ²)	Path Length L _e (mm)	Volume V _e (mm ³)	Weight (g)
	80%	50%							
720	60.0	135	3000	193.0	945	314	158	49,700	340

Winding Information					Temperature Rating		
Winding Length Per Turn				Wound Coil Dimensions (mm)		Curie Temp: 500°C	
Winding Factor	(mm)	Winding Factor	(mm)	Maximum OD (70%)	89.2	Coating Temp (Continuous up to): 200°C	
				Maximum HT (70%)	45.4		
0%	77.7	40%	95.7	Surface Area (mm ²)		Notes:	
20%	86.6	45%	97.9				
25%	89.0	50%	100.1	Unwound Core			12,700
30%	90.5	60%	106	40% Winding Factor			18,400
35%	93.4	70%	112				

